

How to use SNMP to set up the PoE state in DES-3028P

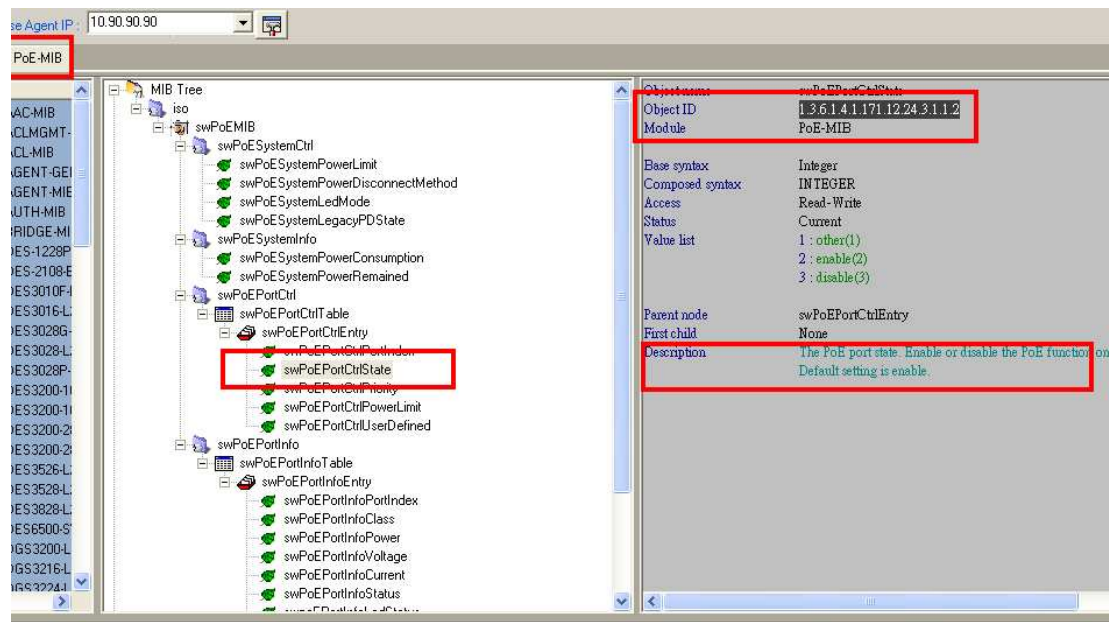
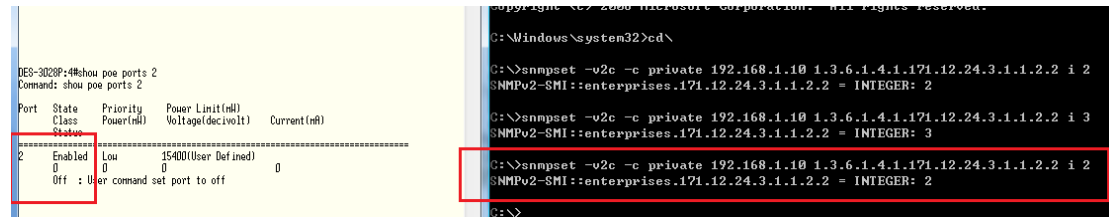
MIB-file:PoE.mib:

swPoEPortCtrlState

Object ID 1.3.6.1.4.1.171.12.24.3.1.1.2

PoE port enable

C:\>snmpset -v2c -c private 192.168.1.10 1.3.6.1.4.1.171.12.24.3.1.1.2 i 2



PoE port disable

snmpset -v2c -c private 192.168.1.10 1.3.6.1.4.1.171.12.24.3.1.1.2 i 3

