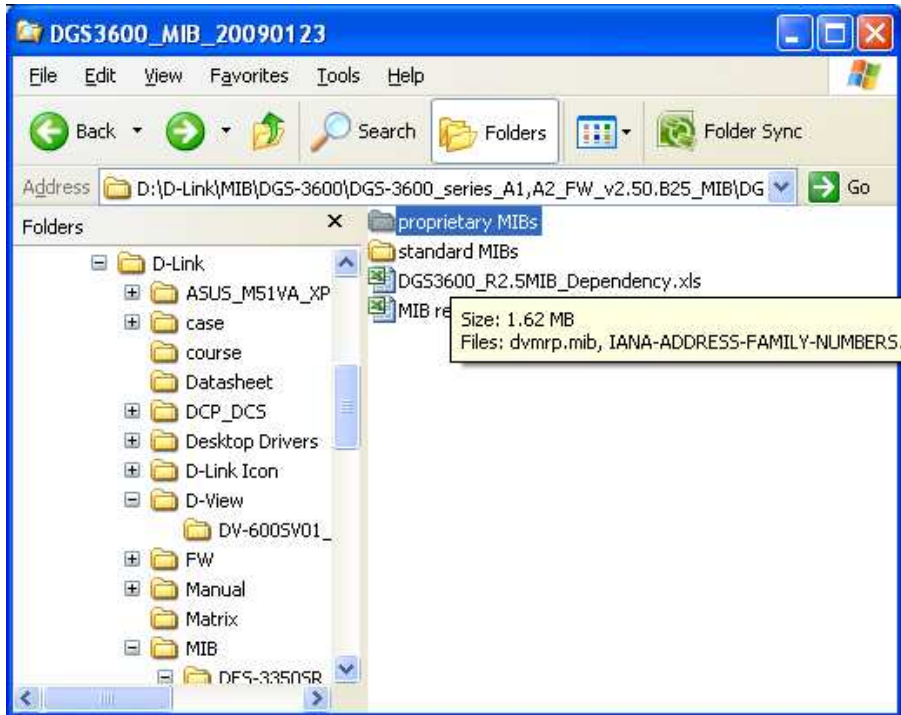
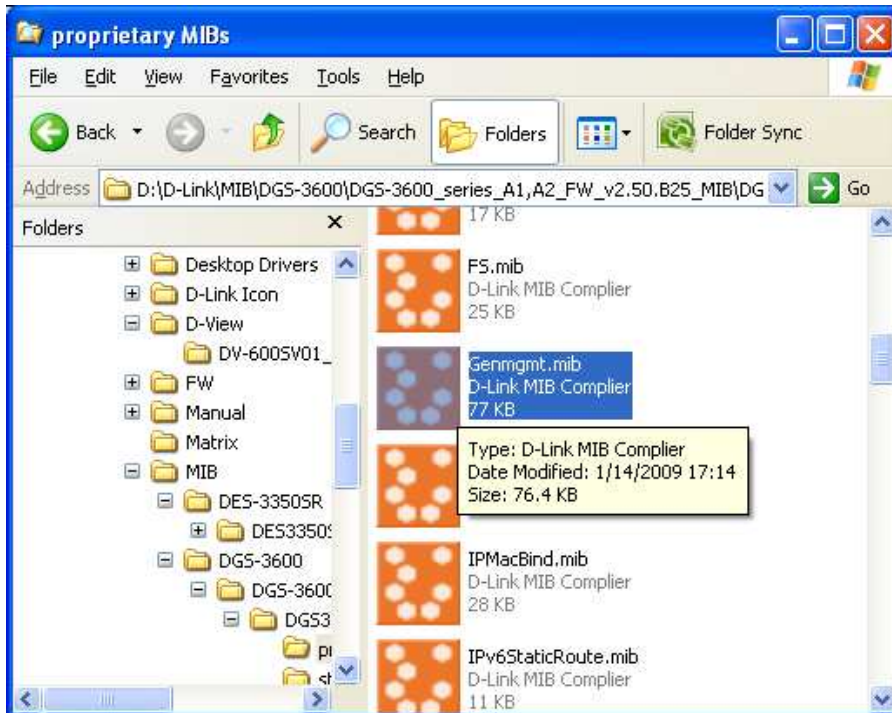


DGS-3650 Port Utilization OIDs

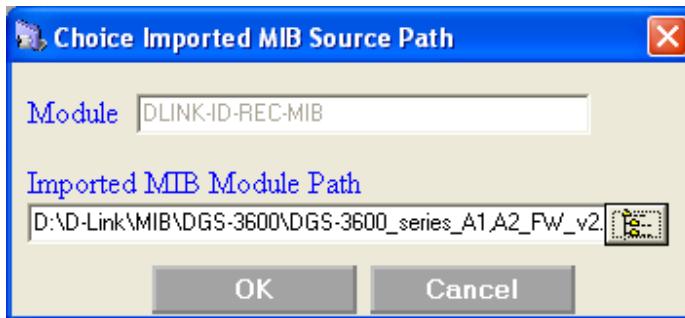
1. Extract zip file “DGS-3600_series_A1_A2_FW_v2.50.B25_MIB.zip”.
2. In the extracted folder, find sub folder “proprietary MIBs” and open it.



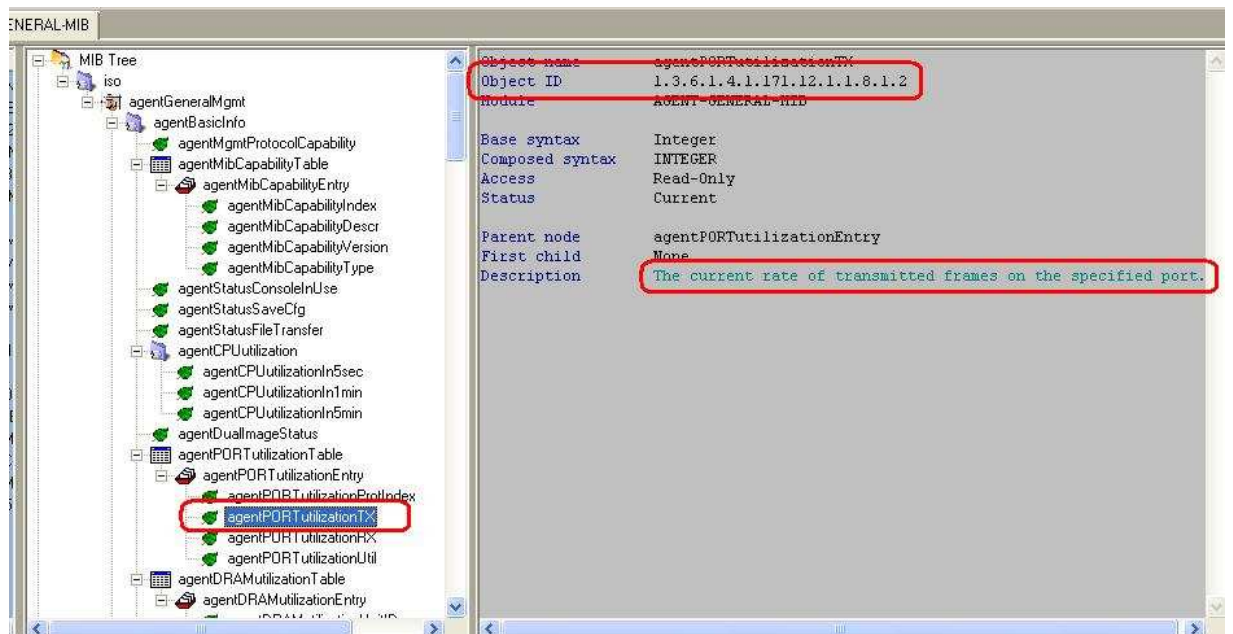
3. Find MIB file “Genmgmt.mib”.



- Use an SNMP server (D-View in this example) to open the file, and import related MIB "DLINK-ID-REC-MIB", which is in the same folder as Genmgmt.mib.



- Port Utility Objects will be inside.
1.3.6.1.4.1.171.12.1.1.8.1.2



1.3.6.1.4.1.171.12.1.1.8.1.3

GENERAL-MIB

MIB Tree

- iso
 - agentGeneralMgmt
 - agentBasicInfo
 - agentMgmtProtocolCapability
 - agentMibCapabilityTable
 - agentMibCapabilityEntry
 - agentMibCapabilityIndex
 - agentMibCapabilityDescr
 - agentMibCapabilityVersion
 - agentMibCapabilityType
 - agentStatusConsoleInUse
 - agentStatusSaveCtg
 - agentStatusFileTransfer
 - agentCPUUtilization
 - agentCPUUtilizationIn5sec
 - agentCPUUtilizationIn1min
 - agentCPUUtilizationIn5min
 - agentDualImageStatus
 - agentPORTutilizationTable
 - agentPORTutilizationEntry
 - agentPORTutilizationProtIndex
 - agentPORTutilizationTX
 - agentPORTutilizationRX
 - agentPORTutilizationUtil
 - agentDRAMUtilizationTable
 - agentDRAMUtilizationEntry

Object name	agentPORTUtilizationRX
Object ID	1.3.6.1.4.1.171.12.1.1.8.1.3
Module	AGENT-GENERAL-MIB
Base syntax	Integer
Composed syntax	INTEGER
Access	Read-Only
Status	Current
Parent node	agentPORTUtilizationEntry
First child	None
Description	The current rate of received frames on the specified port.

1.3.6.1.4.1.171.12.1.1.8.1.4

GENERAL-MIB

MIB Tree

- iso
 - agentGeneralMgmt
 - agentBasicInfo
 - agentMgmtProtocolCapability
 - agentMibCapabilityTable
 - agentMibCapabilityEntry
 - agentMibCapabilityIndex
 - agentMibCapabilityDescr
 - agentMibCapabilityVersion
 - agentMibCapabilityType
 - agentStatusConsoleInUse
 - agentStatusSaveCtg
 - agentStatusFileTransfer
 - agentCPUUtilization
 - agentCPUUtilizationIn5sec
 - agentCPUUtilizationIn1min
 - agentCPUUtilizationIn5min
 - agentDualImageStatus
 - agentPORTutilizationTable
 - agentPORTutilizationEntry
 - agentPORTutilizationProtIndex
 - agentPORTutilizationTX
 - agentPORTutilizationRX
 - agentPORTutilizationUtil
 - agentDRAMUtilizationTable
 - agentDRAMUtilizationEntry

Object name	agentPORTUtilizationUtil
Object ID	1.3.6.1.4.1.171.12.1.1.8.1.4
Module	AGENT-GENERAL-MIB
Base syntax	Integer
Composed syntax	INTEGER
Access	Read-Only
Status	Current
Value list	1 : 0..100
Parent node	agentPORTUtilizationEntry
First child	None
Description	The current percentages regarding port statistics.