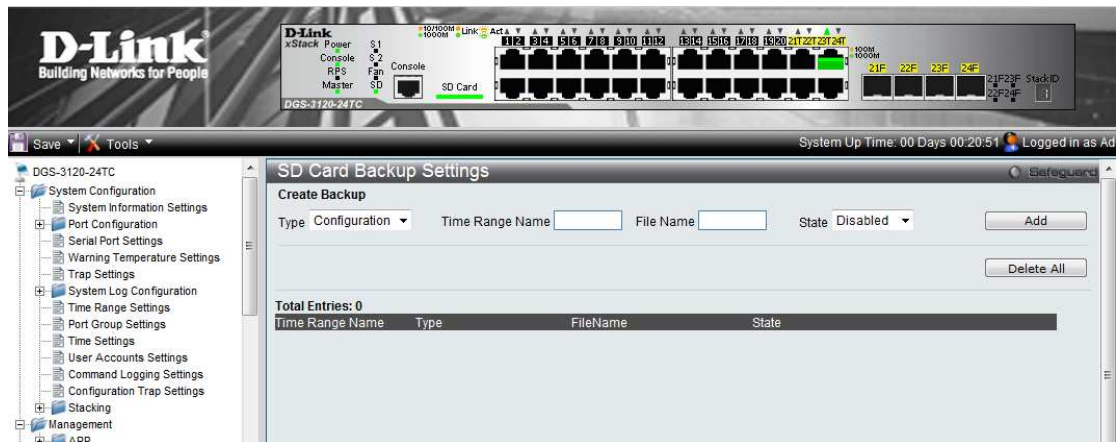
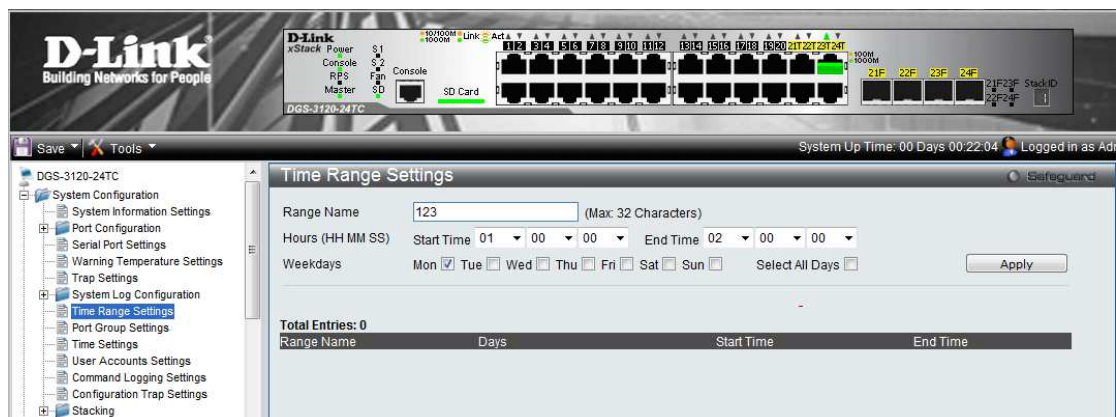


# How to set SD card backup/execute on switches with SD card reader?

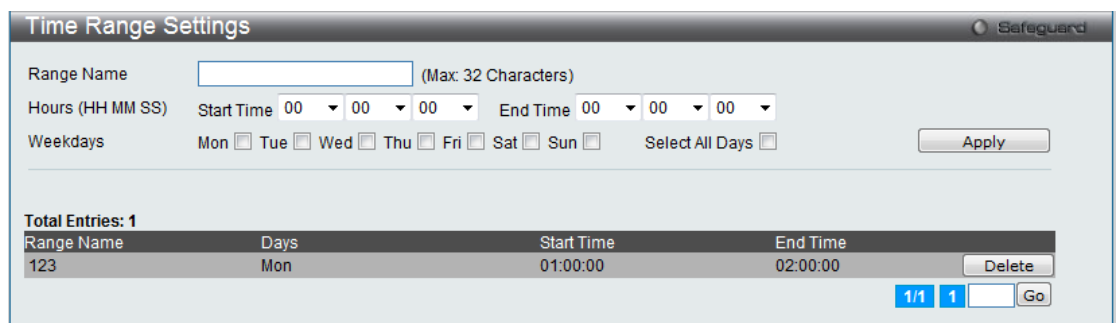
The WebUI:



Step 1: Create a “Time Range” under [System Configuration]->[Time Range Settings]. For example, select [start time 1:00:00], [end time 2:00:00] and [Monday].



Step 2: Apply the time range setting, there will be a “123” time range template.



Step 3: Go to SD card backup options, input time range name “123”, the backup filename “d:/backup\_config.cfg”, select [Enable]. Then click [Add].

The screenshot shows a window titled "SD Card Backup Settings" with a "Safeguard" icon in the top right corner. Below the title bar is a "Create Backup" section with the following fields: "Type" set to "Configuration", "Time Range Name" (empty), "File Name" (empty), and "State" set to "Disabled". There are "Add" and "Delete All" buttons to the right of these fields. Below this section, it says "Total Entries: 1". A table displays the following entry:

Time Range Name	Type	FileName	State	
123	configuration	d:/backup_config.cfg	Enabled	<input type="button" value="Edit"/> <input type="button" value="Delete"/>