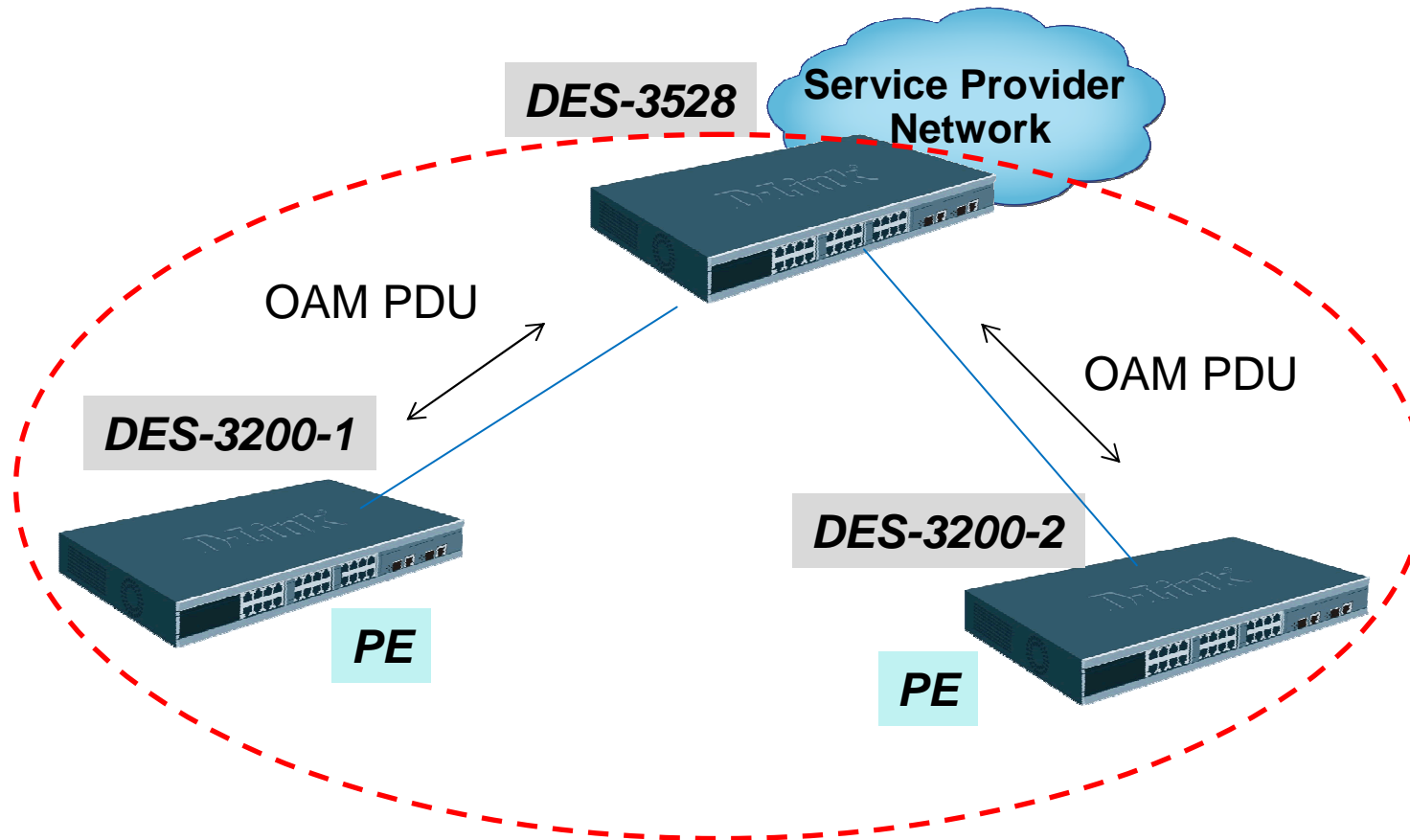


Network Topology



The Goals:

1. Enable the **Ethernet OAM** & monitor the remote client status
2. Enable OAM **Remote Loopback** mechanism
3. Enable the **Critical Event notification**

Ethernet OAM

DGS-3528

```
config ethernet_oam ports 1-2 state enable  
config ethernet_oam ports 1-2 mode active
```

DES-3200 (1 & 2)

```
config ethernet_oam ports 1 state enable  
config ethernet_oam ports 1 mode passive
```

Pull and plug Port 1 of DES-3200 and check the OAM status on Port 1 of DES-3200 or Port 1 of DGS-3538

>show ethernet_oam ports 1-2 status

```
DES-3528P:5#show ethernet_oam ports 1-2 status  
Command: show ethernet_oam ports 1-2 status  
Port 1  
Local Client  
-----  
OAM : Enabled  
Mode : Active  
Max OAMPDU : 1518 Bytes  
Remote Loopback : Support  
Unidirection : Not Supported  
Link Monitoring : Support  
Variable Request : Not Supported  
PDU Revision : 2  
Operation Status : Operational  
Loopback Status : No Loopback  
Remote Client  
-----  
Mode : Passive  
MAC Address : 00-1E-58-6E-97-80  
Vendor (OUI) : 00055d  
Max OAMPDU : 1518 Bytes  
Unidirection : Not Supported  
Link Monitoring : Support  
Variable Request : Not Supported  
PDU Revision : 1  
Vendor Info : 0
```

Ethernet OAM Packet Capture

No. .	Time	Source	Destination	Protocol	Info
1	0.000000	00:22:b0:7a:66:81	Slow-Protocols	OAM	OAMPDU: Information
2	0.058748	D-Link_6e:97:80	Slow-Protocols	OAM	OAMPDU: Information
3	1.000006	00:22:b0:7a:66:81	Slow-Protocols	OAM	OAMPDU: Information
4	1.056723	D-Link_6e:97:80	Slow-Protocols	OAM	OAMPDU: Information

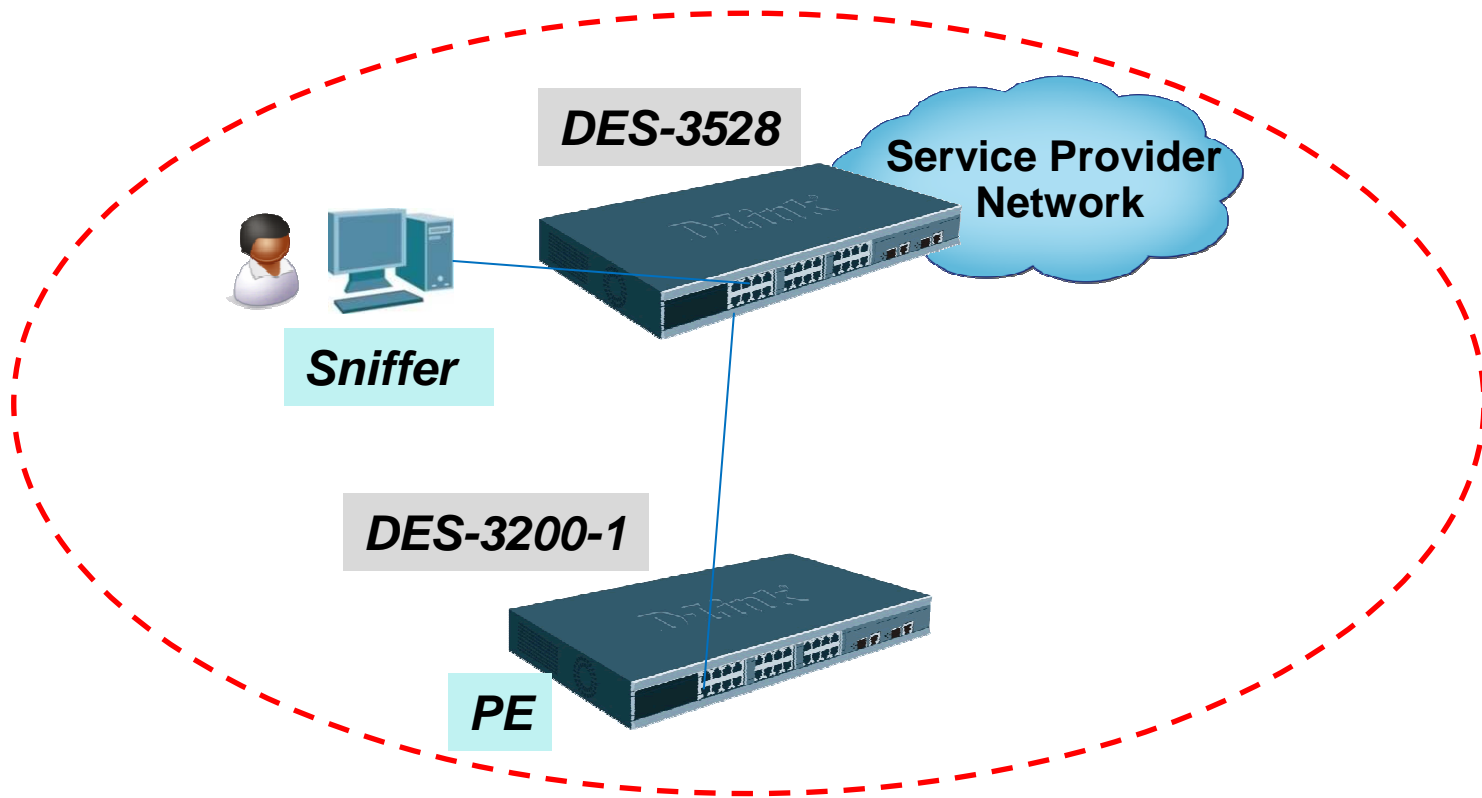
+ Frame 1 (64 bytes on wire, 64 bytes captured)

- Ethernet II, Src: 00:22:b0:7a:66:81 (00:22:b0:7a:66:81), Dst: Slow-Protocols (01:80:c2:00:00:02)
 - Destination: Slow-Protocols (01:80:c2:00:00:02)
 - Source: 00:22:b0:7a:66:81 (00:22:b0:7a:66:81)
Type: Slow Protocols (0x8809)
 - OAM Protocol
 - Slow Protocols subtype: OAM (0x03)
 - Flags: 0x0050 (local: Discovery complete, remote: Discovery complete)
OAMPDU code: Information (0x00)
 - Type: Local Information TLV (0x01)
 - Type: Remote Information TLV (0x02)



OAMPDU, which is the multicast MAC address “**01-80-C2-00-00-02**”

Enable Ethernet OAM Critical Event



Remote Loopback OAM Configurations

DGS-3528

```
config vlan vlanid 1 delete 3  
create vlan 3 tag 3  
config vlan vlanid 3 add untagged 3  
config mirror port 3 add source ports 1 both  
enable mirror
```

```
config ipif System ipaddress 10.90.90.90/8  
config ethernet_oam ports 1 mode active  
config ethernet_oam ports 1 state enable  
config ethernet_oam ports 1 received_remote_loopback process
```

DES-3200 (1 & 2)

```
config ipif System ipaddress 10.90.90.91/8  
config ethernet_oam ports 1 mode active  
config ethernet_oam ports 1 state enable  
config ethernet_oam ports 1 received_remote_loopback process
```

Issue the following command to **Start/Stop** the Remote_Loopback on DES-3528

```
>config ethernet_oam ports 1 remote_loop start  
>config ethernet_oam ports 1 remote_loop stop
```

Remote Loopback OAM Status

Show Ethernet_OAM Statistics by the following commands

```
DES-3200-28:4#show ethernet_oam ports 1 statistics
Command: show ethernet_oam ports 1 statistics
Port 1
-----
Information OAMPDU Tx           : 24
Information OAMPDU Rx           : 22
Unique Event Notification OAMPDU Tx : 0
Unique Event Notification OAMPDU Rx : 0
Duplicate Event Notification OAMPDU Tx : 0
Duplicate Event Notification OAMPDU Rx : 0
Loopback Control OAMPDU Tx      : 1
Loopback Control OAMPDU Rx      : 0
Variable Request OAMPDU Tx      : 0
Variable Request OAMPDU Rx      : 0
Variable Response OAMPDU Tx     : 0
Variable Response OAMPDU Rx     : 0
Organization Specific OAMPDUs Tx : 0
Organization Specific OAMPDUs Rx : 0
Unsupported OAMPDU Tx           : 0
Unsupported OAMPDU Rx           : 0
Frames Lost Due To OAM          : 0
```

Remote_loopback packet (Start)

No. -	Time	Source	Destination	Protocol	Info
3	2010-02-01 17:22:54.803919	00:21:91:af:e9:d1	Slow-Protocols	OAM	OAMPDU: Information
4	2010-02-01 17:22:54.826190	D-Link_03:52:81	Slow-Protocols	OAM	OAMPDU: Information
5	2010-02-01 17:22:55.093401	D-Link_03:52:81	Slow-Protocols	OAM	OAMPDU: Loopback Control
6	2010-02-01 17:22:55.114757	00:21:91:af:e9:d1	Slow-Protocols	OAM	OAMPDU: Information

Frame 5 (64 bytes on wire, 64 bytes captured)
Ethernet II, Src: D-Link_03:52:81 (00:80:c8:03:52:81), Dst: slow-Protocols (01:80:c2:00:00:02)

OAM Protocol
Slow Protocols subtype: OAM (0x03)
Flags: 0x0050 (local: Discovery complete, remote: Discovery complete)
OAMPDU code: Loopback Control (0x04)
Commands: 0x01 (Enable Remote Loopback)
.... ..1 = Enable Remote Loopback: True
.... ..0 = Disable Remote Loopback: False



Remote_loopback packet (Stop)

No. -	Time	Source	Destination	Protocol	Info
17	2010-02-01 17:23:00.355460	D-Link_03:52:81	Slow-Protocols	OAM	OAMPDU: Information
18	2010-02-01 17:23:00.356165	D-Link_03:52:81	Slow-Protocols	OAM	OAMPDU: Loopback Control
19	2010-02-01 17:23:00.357571	00:21:91:af:e9:d1	Slow-Protocols	OAM	OAMPDU: Information
20	2010-02-01 17:23:00.359541	D-Link_03:52:81	Slow-Protocols	OAM	OAMPDU: Information

Frame 18 (64 bytes on wire, 64 bytes captured)
Ethernet II, Src: D-Link_03:52:81 (00:80:c8:03:52:81), Dst: slow-Protocols (01:80:c2:00:00:02)

OAM Protocol
Slow Protocols subtype: OAM (0x03)
Flags: 0x0050 (local: Discovery complete, remote: Discovery complete)
OAMPDU code: Loopback Control (0x04)
Commands: 0x02 (Disable Remote Loopback)
.... ..0 = Enable Remote Loopback: False
.... ..1 = Disable Remote Loopback: True




Remote Loopback OAM Status

Check DES-3528 Ethernet Remote Loopback Port's Status

```
DES-3528:admin#show ethernet_oam ports 1:1 status
Command: show ethernet_oam ports 1:1 status


Port 1:1
Local Client
-----
OAM                : Enabled
Mode                : Active
Max OAMPDU         : 1518 Bytes
Remote Loopback    : Support
Unidirection       : Not Supported
Link Monitoring    : Support
Variable Request   : Not Supported
PDU Revision       : 0
Operation Status   : Operational
Loopback Status    : Remote Loopback
```



Check DES-3200 Ethernet Remote Loopback Port's Status

```
DES-3200:admin#show ethernet_oam ports 1 status
Command: show ethernet_oam ports 1 status

Port 1
Local Client
-----
OAM                : Enabled
Mode                : Active
Max OAMPDU         : 1518 Bytes
Remote Loopback    : Support
Unidirection       : Not Supported
Link Monitoring    : Support
Variable Request   : Not Supported
PDU Revision       : 0
Operation Status   : Operational
Loopback Status    : Local Loopback
```



Send data from DES-3528 to DES-3200 when Remote_Loopback started

Steps:

1. Start the Remote loopback on DES-3528
>config ethernet_oam ports 1 remote_loop start
2. Issue a 'ping' packet from DES-3528's console to DES-3200
> ping 10.90.90.91
3. From the sniff PC, you will see 2 ICMP packets captured as below.
 - a.) The **first** ICMP packet is from DES-3528 to DES3200
 - b.) the **second** ICMP packet is returned by DES-3200. The original packet's format will be kept **without changed**.

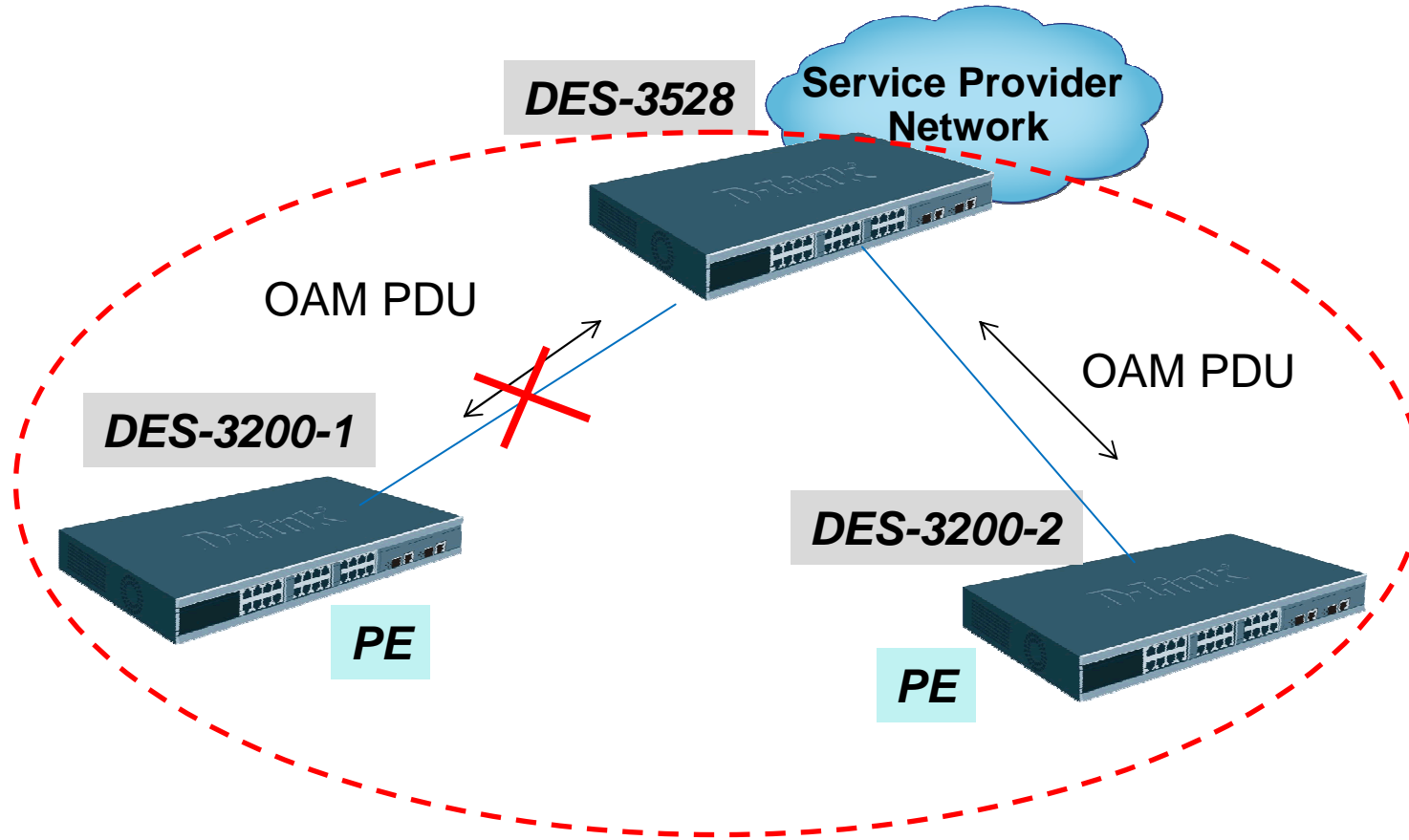
The first packet is from DES-3528

No.	Time	Source	Destination	Protocol	Info
82	39.030850	D-Link_03:52:81	Slow-Protocols	OAM	OAMPDU: Information
83	39.287693	10.90.90.90	10.90.90.91	ICMP	Echo (ping) request
84	39.287860	10.90.90.90	10.90.90.91	ICMP	Echo (ping) request
85	39.998087	00:21:91:af:e9:d1	Slow-Protocols	OAM	OAMPDU: Information
86	40.030007	D-Link_03:52:81	Slow-Protocols	OAM	OAMPDU: Information

⊕ Frame 83 (74 bytes on wire, 74 bytes captured)
⊕ Ethernet II, Src: D-Link_03:52:80 (00:80:c8:03:52:80), Dst: 00:21:91:af:e9:d0 (00:21:91:af:e9:d0)
⊕ Internet Protocol, Src: 10.90.90.90 (10.90.90.90), Dst: 10.90.90.91 (10.90.90.91)
⊕ Internet Control Message Protocol

The second packet is returned by DES-3200

Enable Ethernet OAM Critical Event



Enable Ethernet OAM Critical Event

DGS-3528

```
config ethernet_oam ports 1-2 state enable  
config ethernet_oam ports 1-2 mode active  
config ethernet_oam ports 1-2 critical_link_event critical_event notify_state enable
```

DES-3200 (1 & 2)

```
config ethernet_oam ports 1 state enable  
config ethernet_oam ports 1 mode active  
config ethernet_oam ports 1 critical_link_event critical_event notify_state enable
```

Issue the following command to **display** the event_log

```
>show ethernet_oam ports 1 event log
```

```
DES-3200-10:4# show ethernet_oam ports 1 event_log  
Command: show ethernet_oam ports 1 event_log  
  
Port 1  
-----  
Event Listing  
Index Type Location Time Stamp  
-----  
1 Critical Event Local 0-0-0 0:16  
  
Local Event Statistics  
Error Symbol Event : 0  
Error Frame Event : 0  
Error Frame Period Event : 0  
Errored Frame Seconds Event : 0  
Dying Gasp : 0  
Critical Event : 1  
  
Remote Event Statistics  
Error Symbol Event : 0  
Error Frame Event : 0  
Error Frame Period Event : 0  
Errored Frame Seconds Event : 0  
Dying Gasp : 0  
Critical Event : 0
```

Ethernet OAM Critical Event Packet Capture

No. .	Time	Source	Destination	Protocol	Info
1	0.000000	00:26:5a:2a:e0:10	slow-protocols	OAM	OAMPDU: Information

Frame 1 (60 bytes on wire, 60 bytes captured)

Ethernet II, Src: 00:26:5a:2a:e0:10 (00:26:5a:2a:e0:10), Dst: slow-protocols (01:80:c2:00:00:02)

OAM Protocol

slow protocols subtype: OAM (0x03)

Flags: 0x0054 (CriticalEvent, local: discovery complete, remote: discovery complete)

-0 = Link Fault: False
-0. = Dying Gasp: False
-1.. = Critical Event: True
- 0... = Local Evaluating: False
- ...1 = Local Stable: True
- ..0. = Remote Evaluating: False
- .1.. = Remote Stable: True

OAMPDU code: Information (0x00)

- Type: Local Information TLV (0x01)
- Type: Remote Information TLV (0x02)