

How to use D-View via SNMP v3 to manage a switch

Configuration Procedure:

1. Creating a new SNMP View entry, the view name is “lab_test”, Subtree OID is 1.
#create snmp view lab_test 1 view_type included

PS: You can use the original SNMP View object “restricted”, “Community View” or creat a new one.

2. Creating a SNMP group, the group name is test_group.

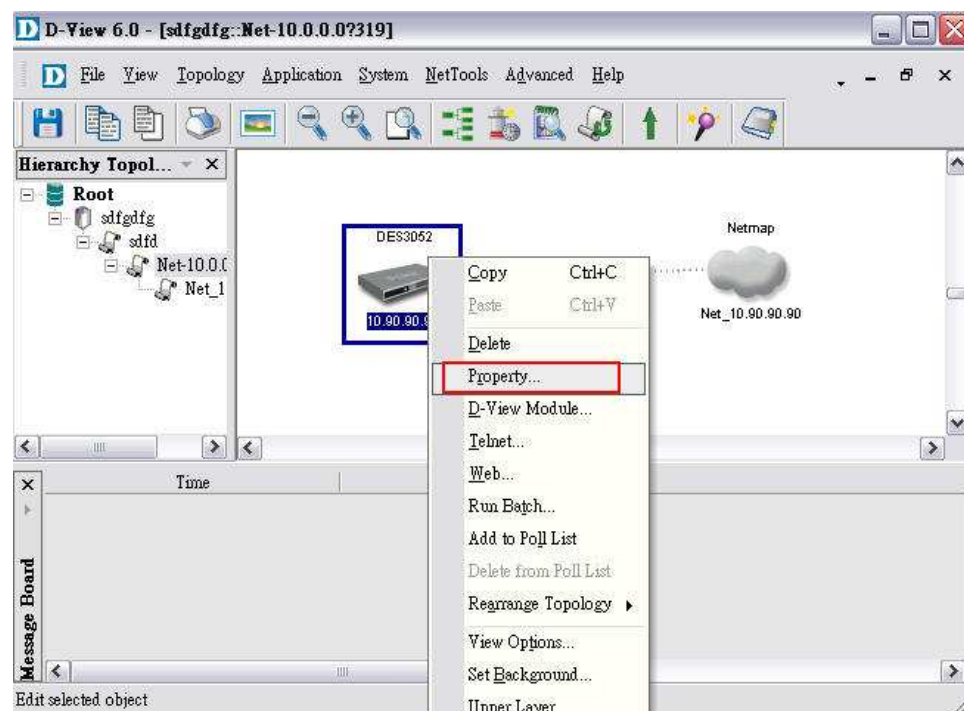
```
#create snmp group test_group v3 auth_priv read_view lab_test write_view lab_test
```

3. Creating a SNMP User “test_user”.

```
# create snmp user test_user test_group encrypted by_password auth md5 12345678  
priv des 87654321
```

4. Set up D-View

Right click the switch icon and select “Property”



5. Selecting SNMP v3 and click Config

The 'Edit Device' window is divided into four sections:

- Basic Information:** Name: Dev-10.90.90.90, Description: (empty), Vender: D-Link, Type: DES3052.
- Interface Configuration:** A table with columns 'Interface IP' and 'Type'. One entry is shown: 10.90.90.90, Ethernet. Buttons for 'Add...', 'Edit...', and 'Delete' are present.
- Detailed Information:** Location: (empty), Buyer: (empty), Buy Date: 2008/11/27, Modules: 0, Port Num: 0, Serial No: (empty), Firmware: (empty), Note 1: (empty), Note 2: (empty).
- Management Method:** A dropdown menu is set to 'SNMP v3'. A 'Config...' button is highlighted with a red box. 'OK' and 'Cancel' buttons are at the bottom.

6. Username: test_user

Security Level: Auth and Encrypt

Auth Arithmetic: MD5 Password: 12345678

Crypt Arithmetic: DES Password: 87654321

The 'Device Management Method' window has tabs for 'SNMP v1/v2c', 'SNMP v3', 'TELNET', 'WEB', and 'Customize'. The 'SNMP v3' tab is active.

Fields and values:

- Username: test_user
- Security Level: Auth and Encrypt
- Auth Arithmetic: MD5
- Auth Pwd: (masked with asterisks)
- Crypt Arithmetic: DES
- Crypt Pwd: (masked with asterisks)

'OK' and 'Cancel' buttons are at the bottom.

Click OK.

And then you can use D-View via SNMP v3 to manage the switch.