

[Topology]

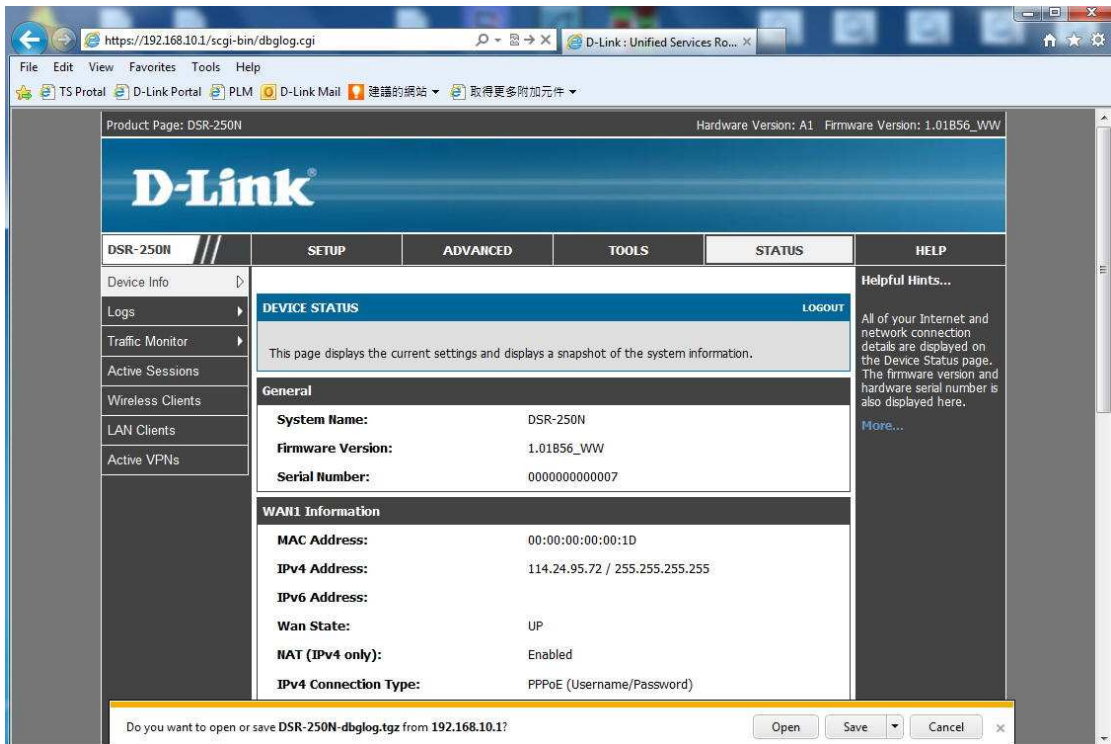
PC1(192.168.10.100)-----(L1:192.168.10.1)DSR

[Procedure]

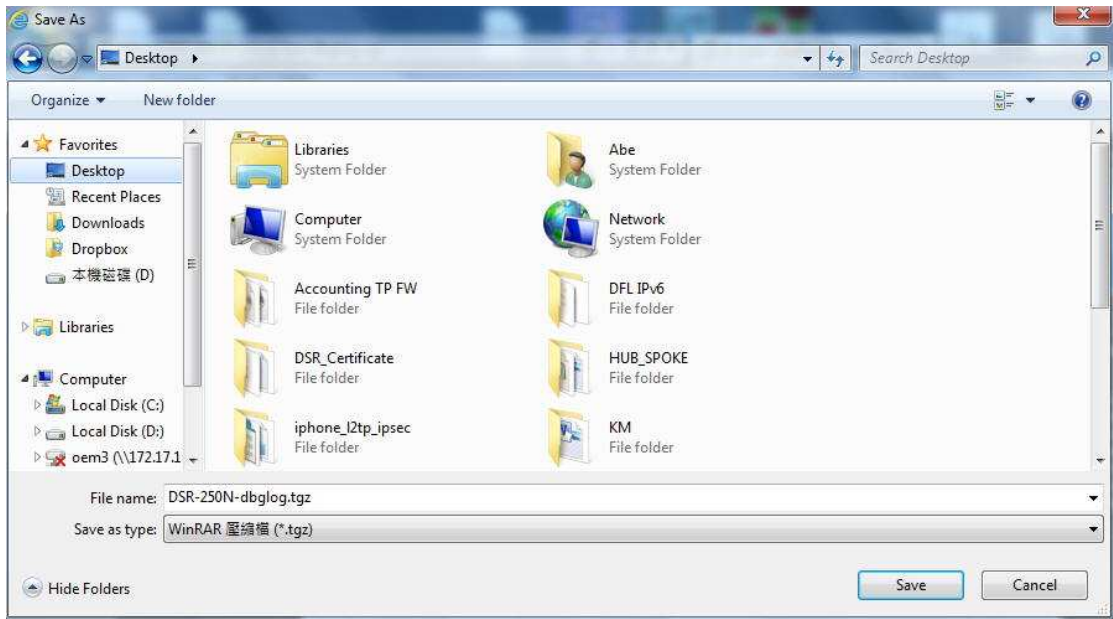
1. On PC1, used browser to login the DSR <https://192.168.10.1>
2. After login successfully, the URL will be <https://192.168.10.1/scgi-bin/platform.cgi>



3. Change the word string "platform.cgi" to "dbglog.cgi", and the browser will pop up a window, and then you can save the dbglog file.



4.



5.



End this document