

How to access the USB storage in DSR series

To access the USB storage in DSR, we did the following testing

[Topology]:

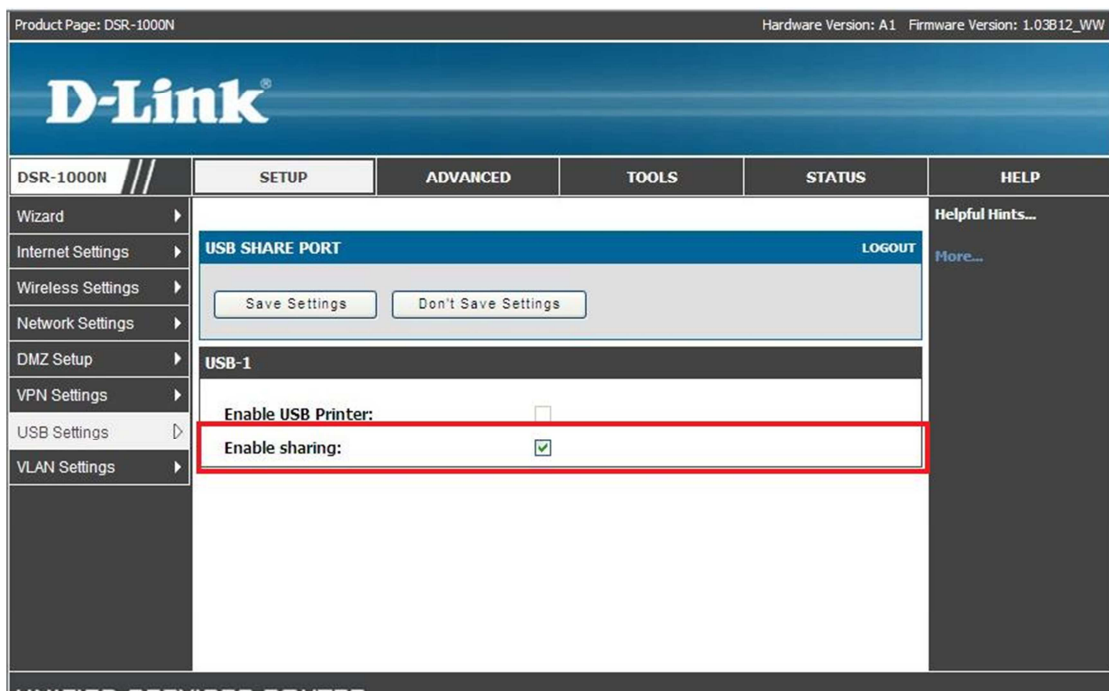
PC1-----DSR-1000---- USB1-----Kingston USB

PC1: Windows Vista

Firmware: 1.03B12.

[Configuration]:

Select the **Enable sharing** function.



Product Page: DSR-1000 Hardware Version: A1 Firmware Version: 1.03812_WW

D-Link

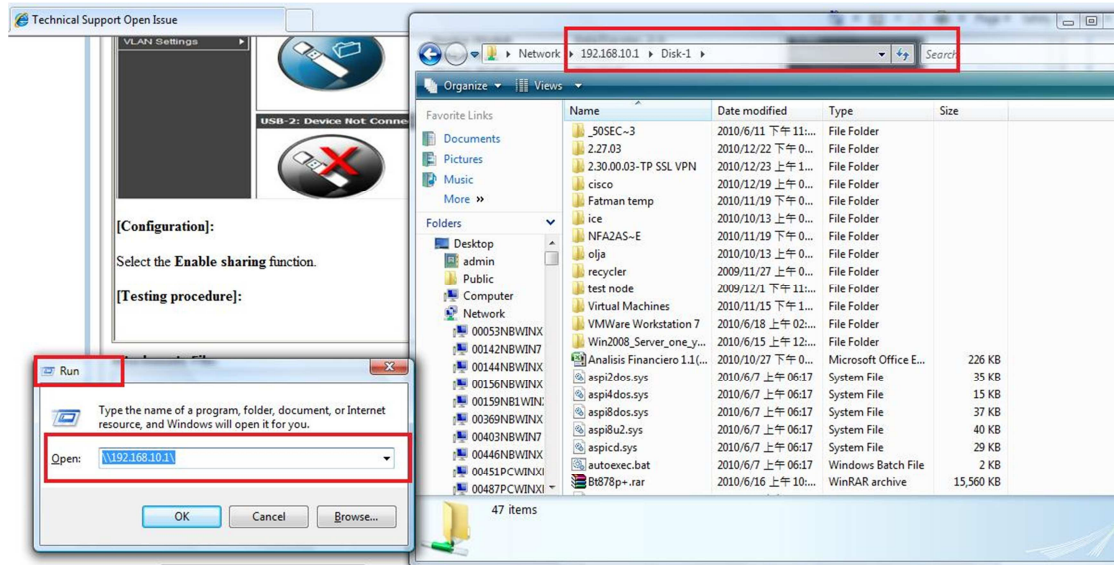
DSR-1000	SETUP	ADVANCED	TOOLS	STATUS	HELP																
<ul style="list-style-type: none"> Wizard Internet Settings Network Settings DMZ Setup VPN Settings USB Settings VLAN Settings 	<h2 style="margin: 0;">USB SETTINGS LOGOUT</h2> <p style="font-size: small;">This page displays information about the USB devices connected to the USB port(s). This page also allows user to do certain configurations on USB devices, such as safely unmounting the devices.</p> <div style="border: 1px solid black; padding: 5px;"> <h3 style="margin: 0;">USB-1: Storage Device Settings</h3> <div style="display: flex; align-items: center;"> <table style="border: none;"> <tr><td>Device Vendor:</td><td>Kingston</td></tr> <tr><td>Device Model:</td><td>DataTraveler_2.0</td></tr> <tr><td>Device Type:</td><td>storage</td></tr> <tr><td>Mount Status:</td><td>Mounted</td></tr> </table> <div style="margin-left: 20px;"> <input type="button" value="Safely Remove"/> </div> </div> </div> <div style="border: 1px solid black; padding: 5px; margin-top: 5px;"> <h3 style="margin: 0;">USB-2: Device Not Connected</h3> <div style="display: flex; align-items: center;"> <table style="border: none;"> <tr><td>Device Vendor:</td><td>NA</td></tr> <tr><td>Device Model:</td><td>NA</td></tr> <tr><td>Device Type:</td><td>NA</td></tr> <tr><td>Mount Status:</td><td>NA</td></tr> </table> </div> </div>				Device Vendor:	Kingston	Device Model:	DataTraveler_2.0	Device Type:	storage	Mount Status:	Mounted	Device Vendor:	NA	Device Model:	NA	Device Type:	NA	Mount Status:	NA	<p>Helpful Hints...</p> <p>Do you know that this page will update dynamically to show the status of the USB devices connected to the router. It is also recommended to use the 'Safely Remove' button to safely remove the hardware before pulling it out of the router.</p> <p>More...</p>
Device Vendor:	Kingston																				
Device Model:	DataTraveler_2.0																				
Device Type:	storage																				
Mount Status:	Mounted																				
Device Vendor:	NA																				
Device Model:	NA																				
Device Type:	NA																				
Mount Status:	NA																				

[Testing procedure]:

1.Type the **Run** from the **Startup** menu .

The screenshot shows a Windows XP desktop environment. The Start menu is open, and the 'Run' option is highlighted. The taskbar at the bottom shows several open windows, including one titled 'Run'. In the background, the D-Link router's web interface is visible, showing the 'USB SETTINGS' page with a 'Safely Remove' button highlighted.

2.You can see the Disk 1 folder as follows



In addition, this method **is NOT** working in **Windows XP** currently firmware and regarding testing result