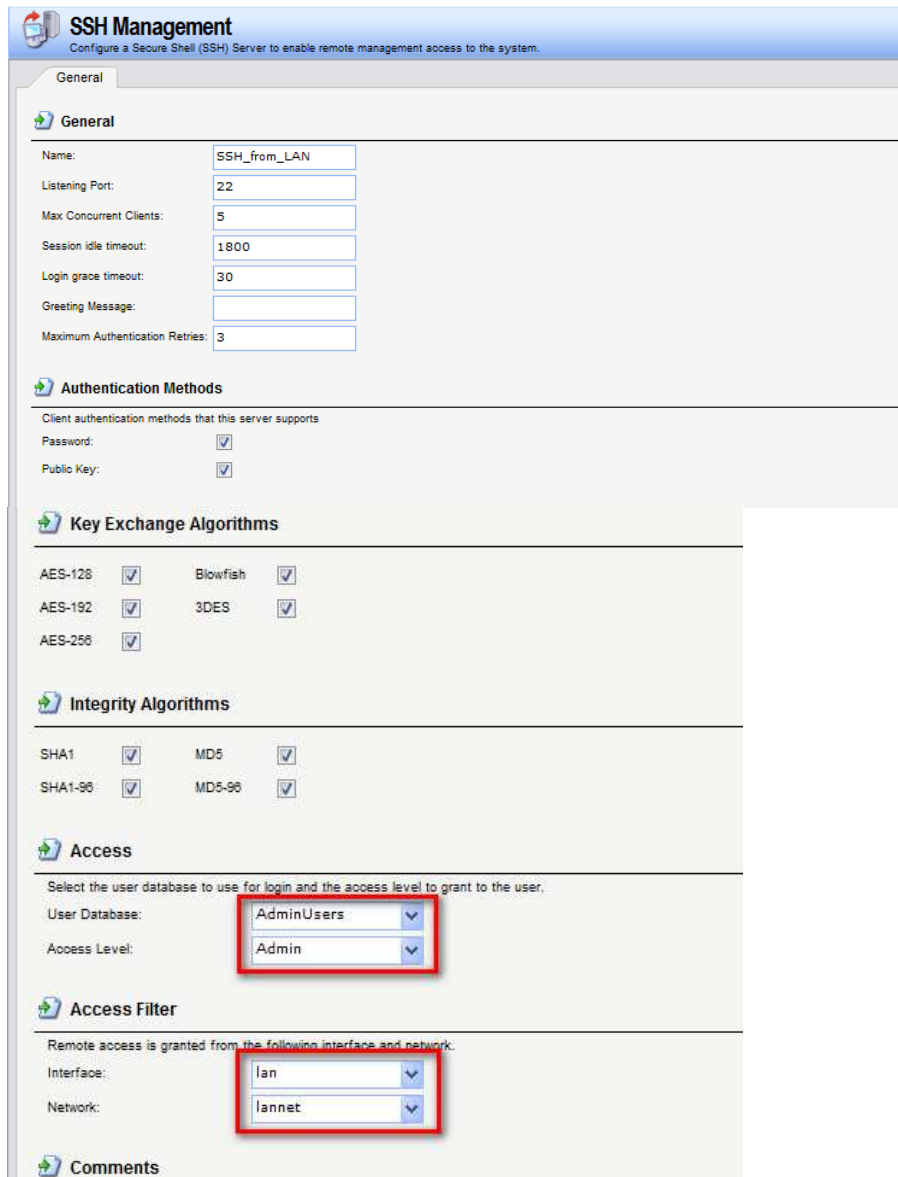
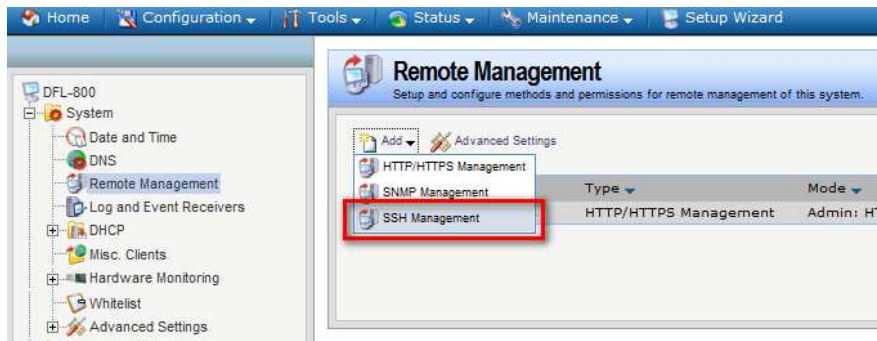
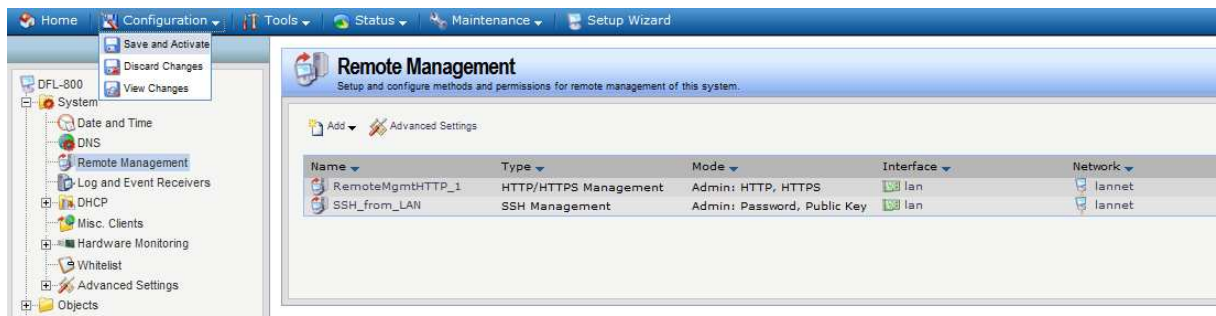


Skonfigurować zdalne zarządzanie przez SSH



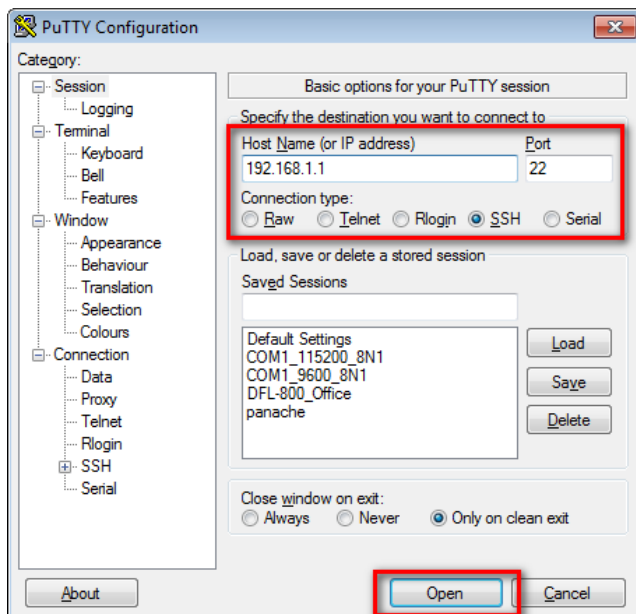
Aktywować konfigurację



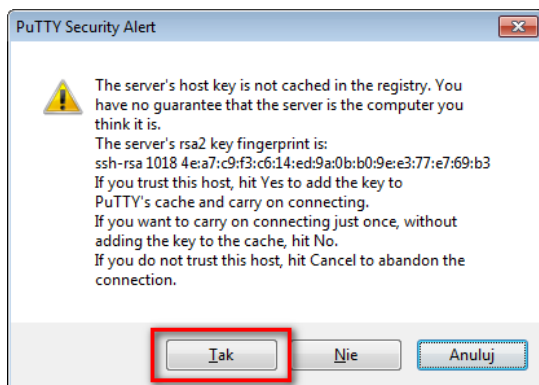
Przy pomocy klienta SSH np. PuTTY:

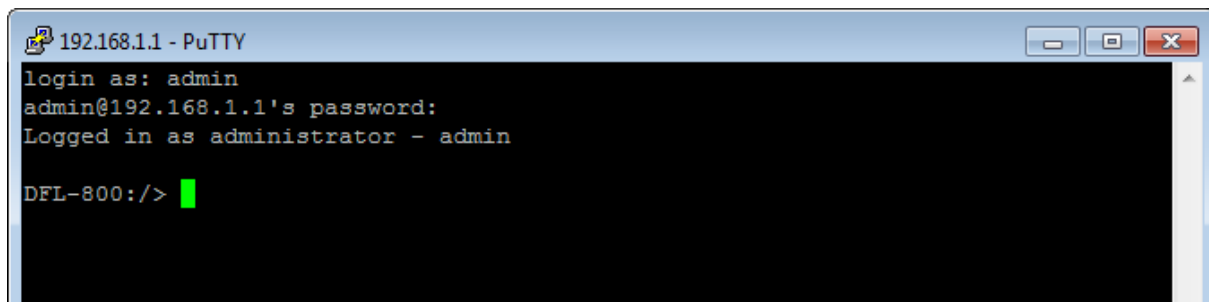
<http://putty.verly.rulez.org/latest/x86/putty.exe>

połączyć się z urządzeniem:



zaakceptować klucz





```
192.168.1.1 - PuTTY
login as: admin
admin@192.168.1.1's password:
Logged in as administrator - admin

DFL-800: />
```

Wygenerować i zapisać do pliku skrypt konfiguracyjny:

```
DFL-800: /> script -create -name=konfiguracja
Script has been successfully created
DFL-800: />
```

Skrypt konfiguracyjny został zapisany w pamięci. Jako alternatywa, polecenie:

```
script -create
```

spowoduje wylistowanie skryptu na konsolę skąd można go będzie skopiować przy pomocy Kopiu&Wklej.

Skrypt zapisany w pamięci można skopiować z urządzenia przy pomocy narzędzia SCP np.:

<http://putty.very.rulez.org/latest/x86/pscp.exe>

```
D:\PuTTY> pscp admin@192.168.1.1:script/konfiguracja konfiguracja.txt
admin@192.168.1.1's password:

konfiguracja.txt          | 3 kB | 4.0 kB/s | ETA: 00:00:00 | 100%

D:\PuTTY>
```

Zostanie utworzony plik konfiguracja.txt w aktualnym katalogu na PC.

```
konfiguracja.txt - Notepad2 (Administrator)
File Edit View Settings ?
1 add LogReceiverMemory MemLog Comments="The internal logger in the firewall" -silent
2 set DateTime TimeZone=GMTplus1 DSTEnabled=False
3 add IKEAlgorithms High DES3Enabled=True AESEnabled=True BlowfishEnabled=True MD5Enabled=True SHA1Enabled=True Comments="High security" -silent
4 add IKEAlgorithms Medium DES3Enabled=True AESEnabled=True BlowfishEnabled=True TwofishEnabled=True CAST128Enabled=True MD5Enabled=True SHA1Enabled=True Comments="High security" -silent
5 set RemoteMgmtSettings HTTPSCertificate=HTTPSCert
6 add IPsecAlgorithms High DES3Enabled=True AESEnabled=True BlowfishEnabled=True MD5Enabled=True SHA1Enabled=True Comments="High security" -silent
7 add IPsecAlgorithms Medium DES3Enabled=True AESEnabled=True BlowfishEnabled=True TwofishEnabled=True CAST128Enabled=True MD5Enabled=True SHA1Enabled=True Comments="High security" -silent
8 add LocalUserDatabase AdminUsers -silent
9 cc LocalUserDatabase AdminUsers
10 add user admin Password="crypt1:91FM3tYemGE=:FaiqNqoV8s=" Groups=administrators -silent
11 cc ..
12 add AddressFolder InterfaceAddresses Comments="This folder contains addresses for interfaces" -silent
13 cc AddressFolder InterfaceAddresses
14 add IP4Address lanet Address=192.168.1.0/24 Comments="The network on interface lan" -silent
15 add IP4Address dmz_ip Address=172.17.100.254 Comments="IPAddress of interface dmz" -silent
16 add IP4Address dmznet Address=172.17.100.0/24 Comments="The network on interface dmz" -silent
17 add IP4Address wan1_ip Address=192.168.110.254 Comments="IPAddress of interface wan1" -silent
18 add IP4Address wan1net Address=192.168.110.0/24 Comments="The network on interface wan1" -silent
19 add IP4Address wan2_ip Address=192.168.120.254 Comments="IPAddress of interface wan2" -silent
20 add IP4Address wan2net Address=192.168.120.0/24 Comments="The network on interface wan2" -silent
21 add IP4Address lan_ip Address=192.168.1.1 Comments="IPAddress of interface lan" -silent
22 cc ..
23 add RemoteMgmtHTTP RemoteMgmtHTTP_1 Interface=lan LocalUserDatabase=AdminUsers HTTP=True HTTPS=True Network=InterfaceAddresses/lanet -silent
24 add ServiceGroup all_tcpudp Members="all_tcp, all_udp" Comments="All TCP and UDP services" -silent
25 add ScheduleProfile NonworkingHours Mon="0-8, 17-24" Tue="0-8, 17-24" Wed="0-8, 17-24" Thu="0-8, 17-24" Fri="0-8, 17-24" Sat="0-24 Sun="0-24 Comments="All hours, except"
26 add ScheduleProfile weekdays Mon="0-24 Tue="0-24 Wed="0-24 Thu="0-24 Fri="0-24 Comments="Monday to Friday, 00:00-23:59" -silent
27 add ScheduleProfile weekends Sat="0-24 Sun="0-24 Comments="Saturday and Sunday, 00:00-23:59" -silent
28 add ScheduleProfile workingHours Mon="8-17 Tue="8-17 Wed="8-17 Thu="8-17 Fri="8-17 Comments="Monday to Friday, 08:00-17:00" -silent
29 set ServiceGroup l2tp_raw Members="l2tp-ctl, l2tp-encap" Comments="L2TP control and transport, unencrypted"
30 add IPRuleFolder Index=1 Name=lan_to_wan1 -silent
31 cc IPRuleFolder 1
32 add IPRule Index=1 Name=drop_smb-all Action=Drop SourceInterface=lan SourceNetwork=InterfaceAddresses/lanet DestinationInterface=wan1 DestinationNetwork=all-nets -silent
33 add IPRule Index=2 Name=allow_ping-outbound Action=NAT SourceInterface=lan SourceNetwork=InterfaceAddresses/lanet DestinationInterface=wan1 DestinationNetwork=all-nets -silent
34 add IPRule Index=3 Name=allow_ftp-passthrough Action=NAT SourceInterface=lan SourceNetwork=InterfaceAddresses/lanet DestinationInterface=wan1 DestinationNetwork=all-nets -silent
35 add IPRule Index=4 Name=allow_standard Action=NAT SourceInterface=lan SourceNetwork=InterfaceAddresses/lanet DestinationInterface=wan1 DestinationNetwork=all-nets -silent
36 cc ..
37 add IPRule Index=2 Name=ping_fw Action=Allow SourceInterface=lan SourceNetwork=InterfaceAddresses/lanet DestinationInterface=core DestinationNetwork=InterfaceAddresses/lanet -silent
38 add RemoteMgmtSSH SSH_from_LAN Interface=lan LocalUserDatabase=AdminUsers Network=InterfaceAddresses/lanet -silent
39 show _errors
Ln1:40 Col1 Sel0 3,95 KB ANSI CR-LF INS Default Text
```

Skopiowany skrypt można ewentualnie skasować z pamięci RAM urządzenia

```
DFL-800:/> script -remove -all
Deleting script "konfiguracja"...Done
```