

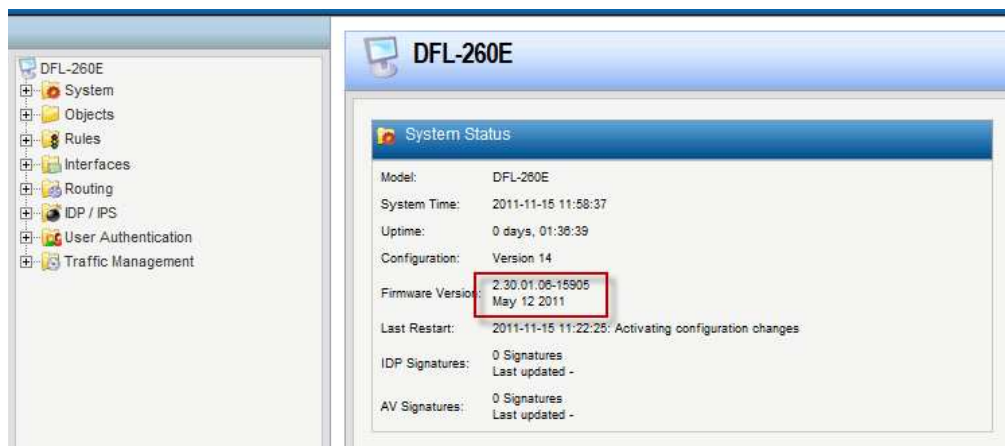
How to setup SSL VPN on DFL

Topology:

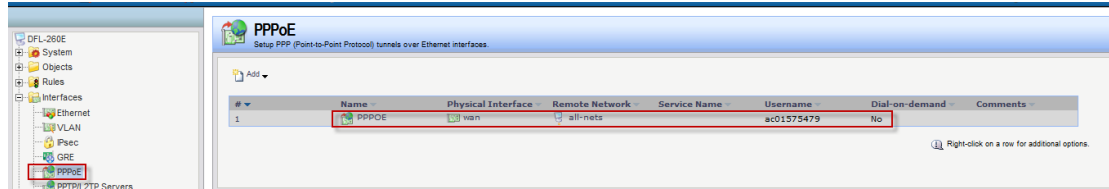
PC 1 ----- DFL (PPPoE) ----- Internet ----- SSL client

Setup:

(1) Check firmware. You need to use 2.30.01.06.



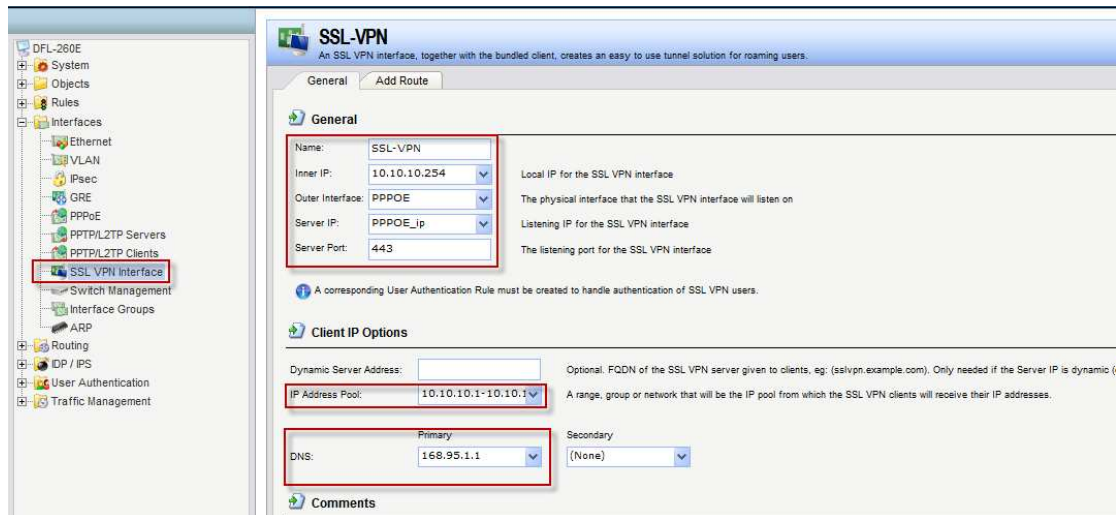
(2) Add a new PPPoE interface.



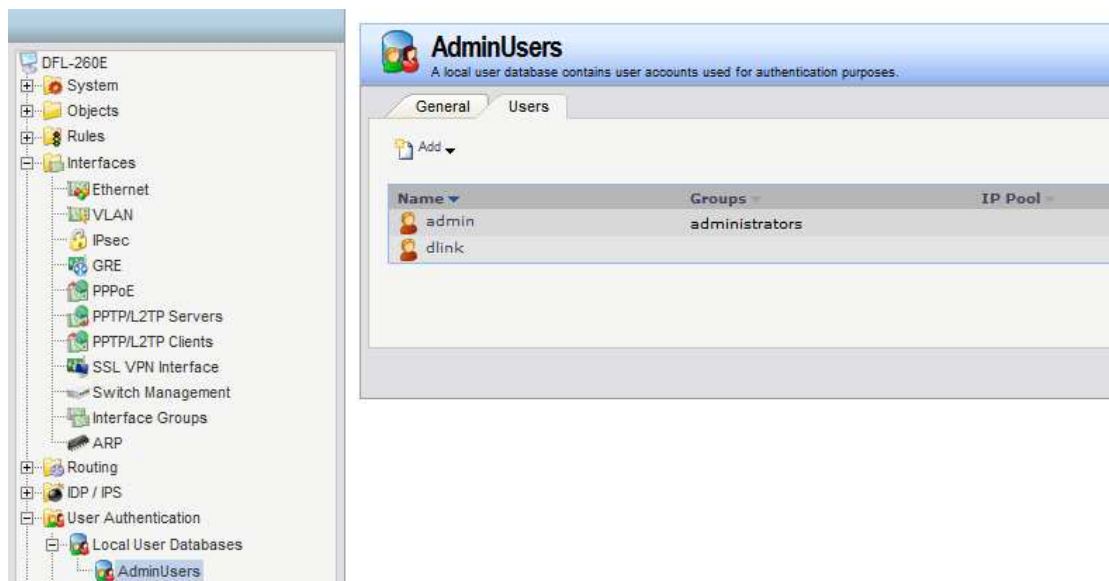
(3) Add a new SSL VPN interface. Inter IP and IP address pool must be in the same subnet.

Outer interface: PPPoE

Server IP: pppoe_ip



(4) Add a new SSL VPN user "dlink".

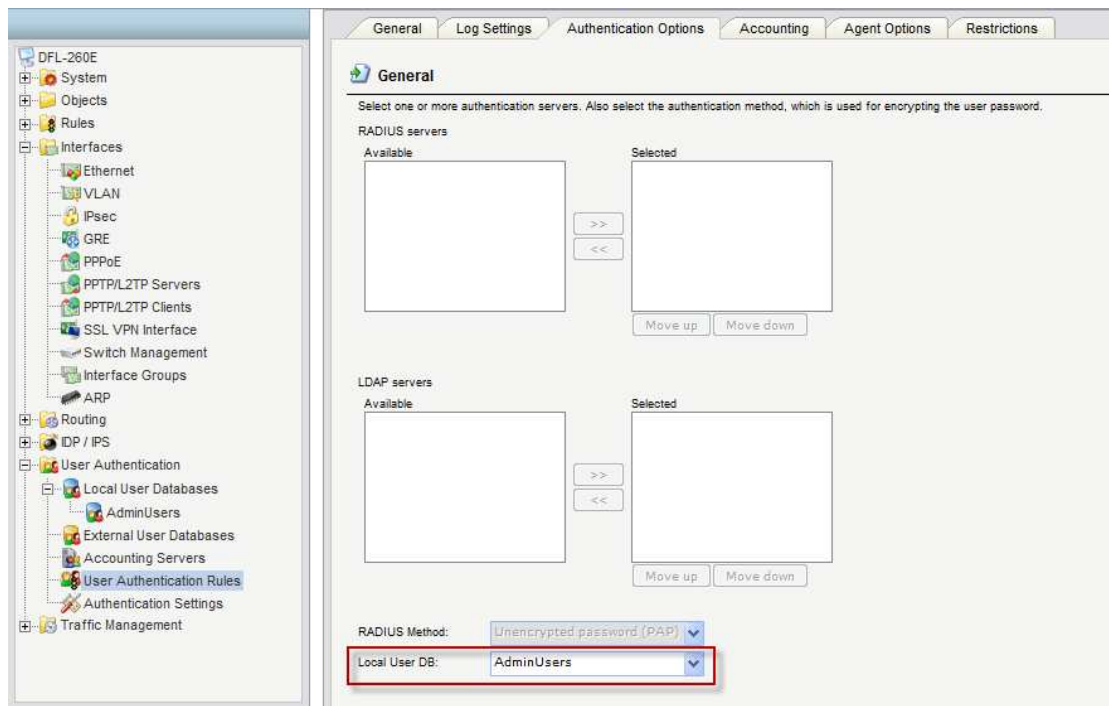
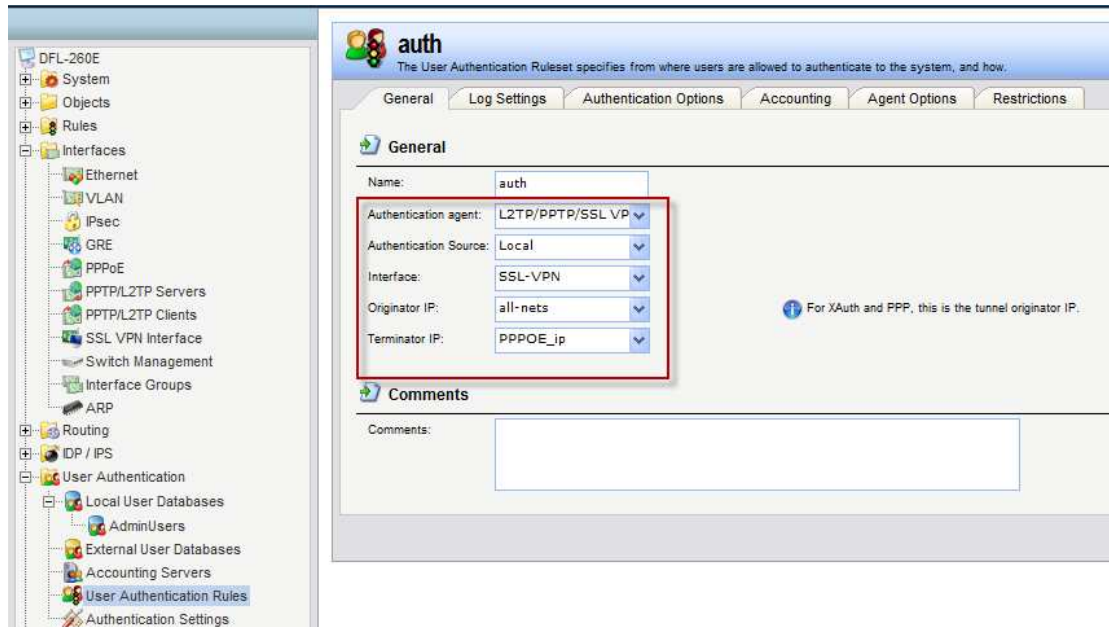


(5) Go to “User Authentication rules”.

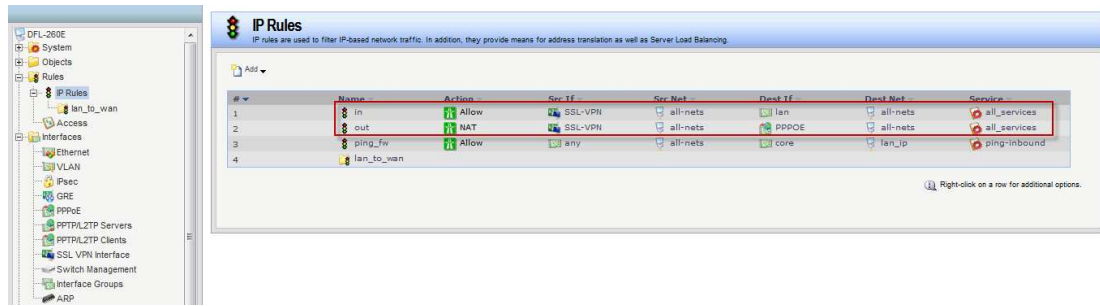
Interface: SSL-VPN

Originator IP: all-nets

Terminator IP: PPPOE_ip



(6) Add 2 IP rules for SSL VPN user.



(7) You can use SSL VPN client to connect DFL.

END