

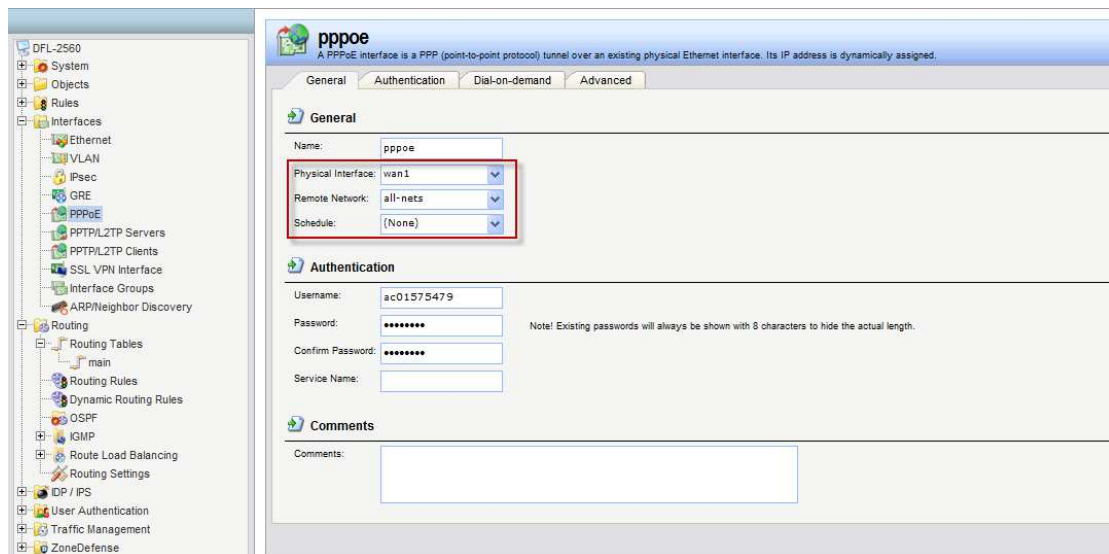
How to setup L2TP over IPsec client (split tunnel).

Topology:

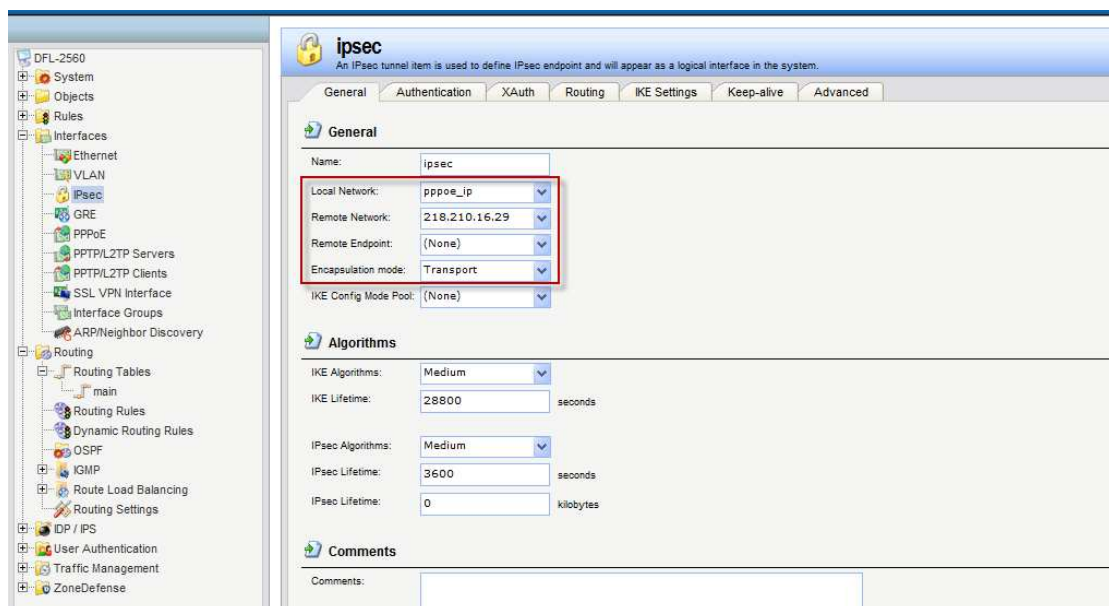
(192.168.10.1)DFL-260E (218.210.16.29)-----ISP------(PPPOE) DFL-2560(192.168.1.1)

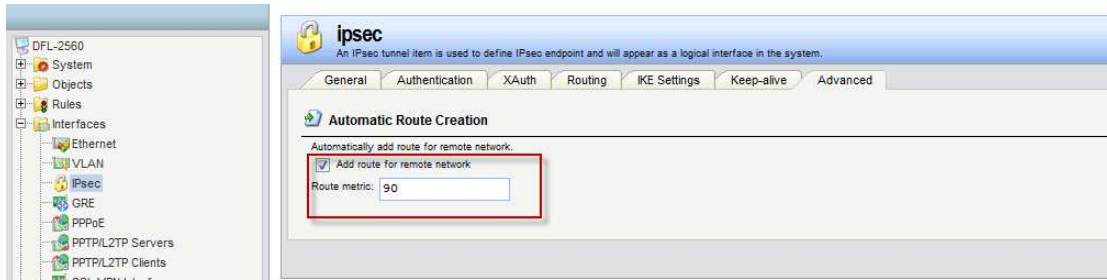
Steps:

(1) Add new PPPOE interface.

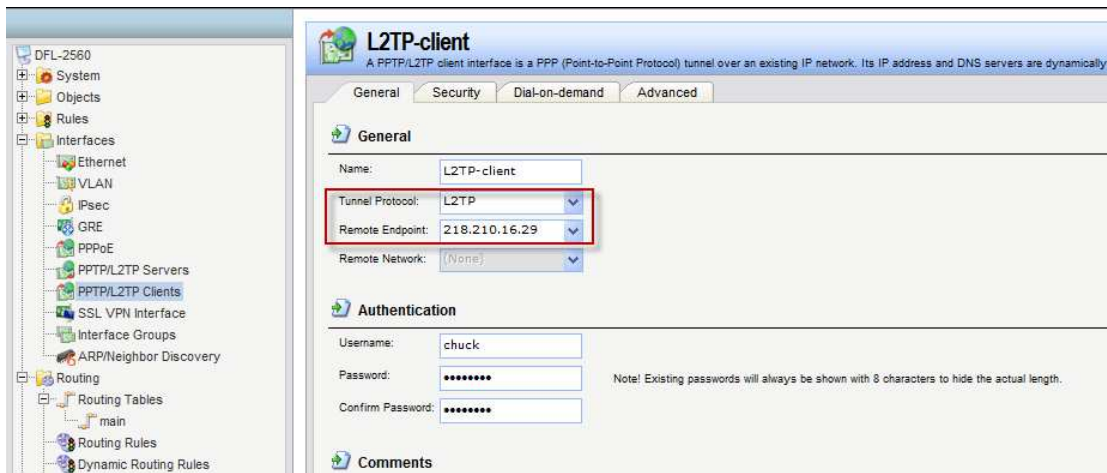


(2) Add new IPsec interface for L2TP over IPsec. Remember network need to use DFL-260E WAN IP address.

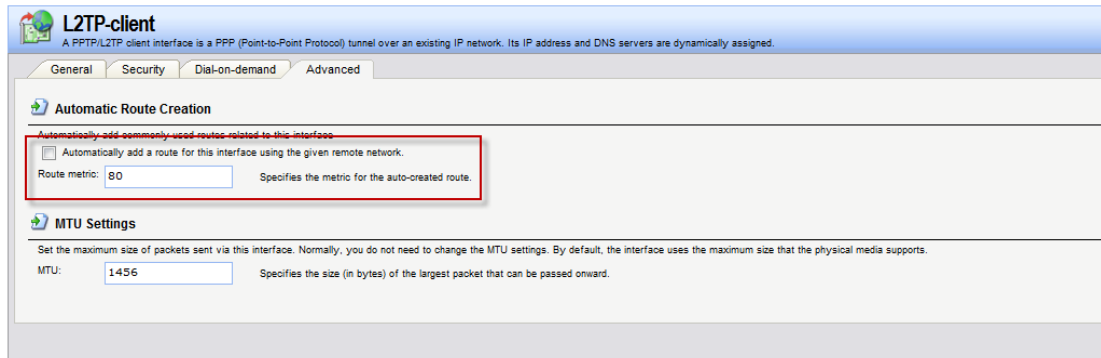




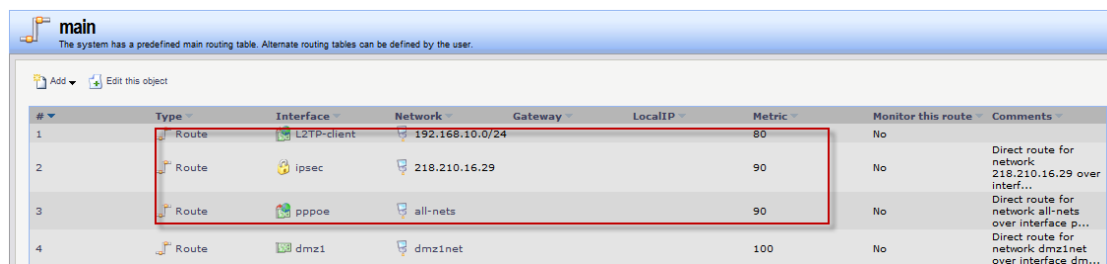
(3) Add new L2TP interface for L2TP over IPsec. Remember endpoint need to use DFL-260E WAN IP address.



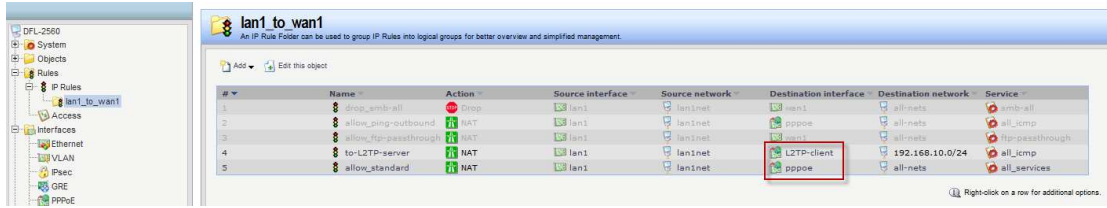
Please disable “automatically add a route” function and change metric from 90 to 80.



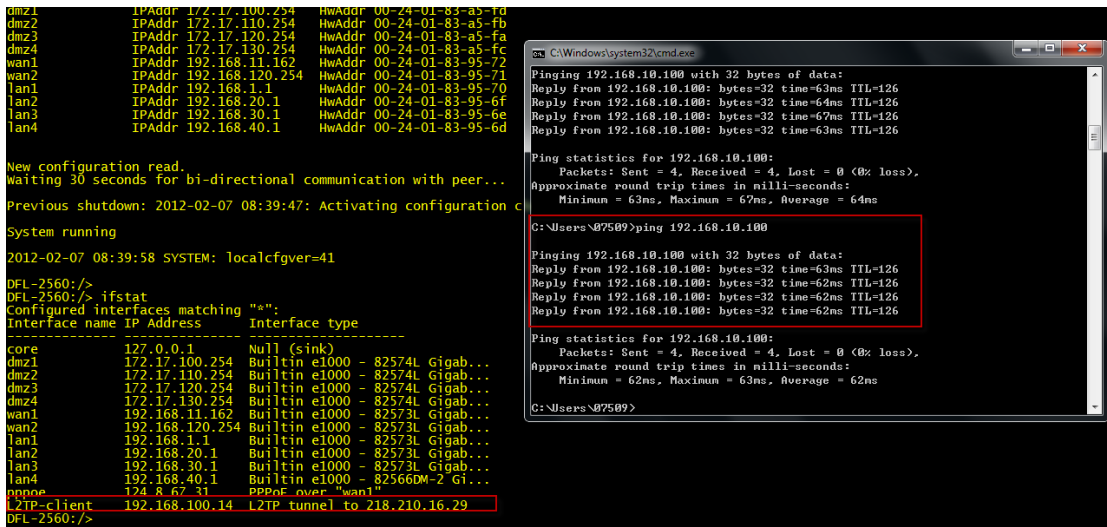
(4) Check main table and remember add L2TP-client route, please see #1.



(5) Please remember change destination interface. If your LAN PC need to go to 192.168.10.0/24, please change destination interface to "L2TP-client"



(6) DFL-2560 can get L2TP IP address from DFL-260E



END