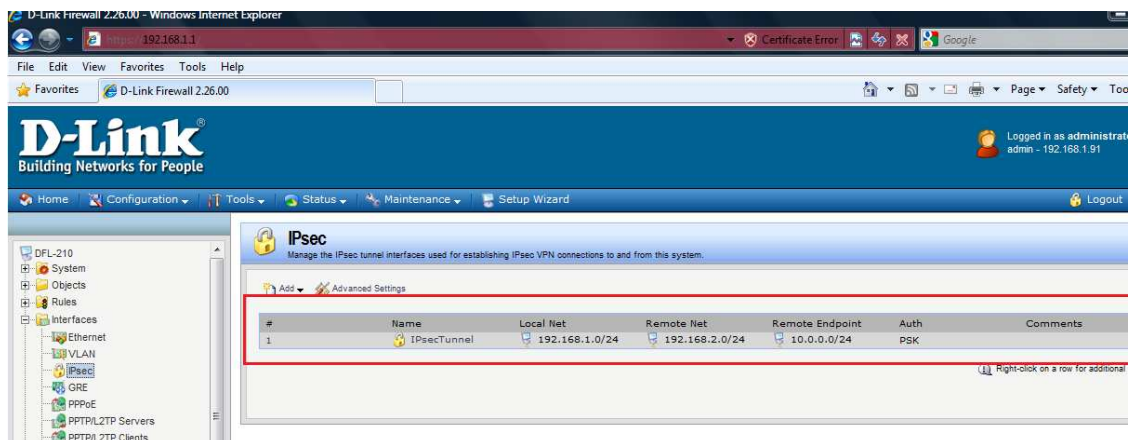
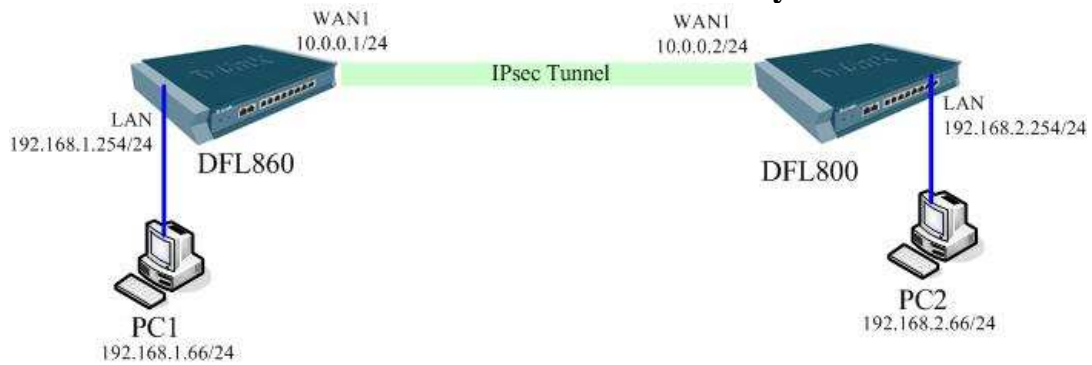


IPsec Lan to Lan with Pre-shared keys on DFL



1. Create a **Pre-shared Key** object

D-Link Firewall 2.26.00 - Windows Internet Explorer

https://192.168.1.1

File Edit View Favorites Tools Help

★ Favorites D-Link Firewall 2.26.00

D-Link®

Building Networks for People

Home Configuration Tools Status Maintenance Setup Wizard

DFL-210

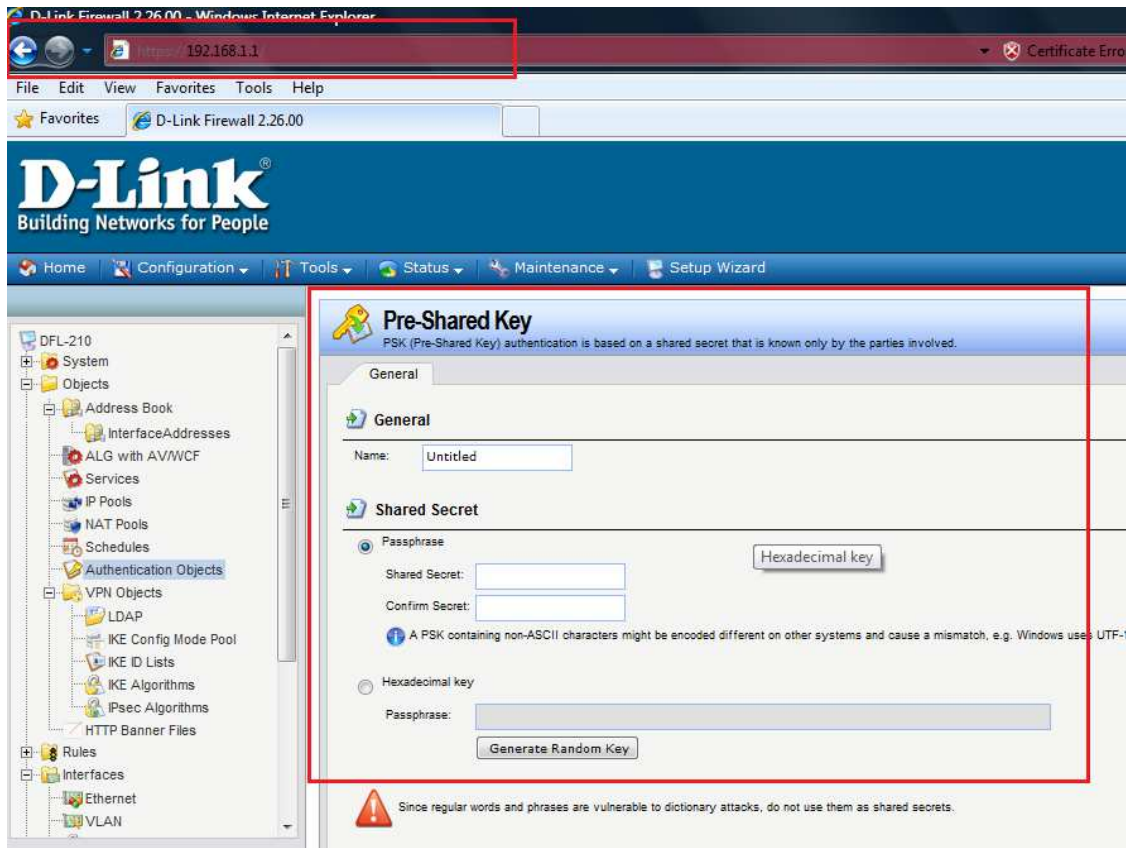
- System
- Objects
 - Address Book
 - InterfaceAddresses
 - ALG with AV/WCF
 - Services
 - IP Pools
 - NAT Pools
 - Schedules
 - Authentication Objects**
 - VPN Objects
 - LDAP
 - IKE Config Mode Pool
 - IKE ID Lists
 - IKE Algorithms
 - Ipssec Algorithms
 - HTTP Banner Files
- Rules
- Interfaces
 - Ethernet
 - VLAN

Authentication Objects

Add, remove and modify Pre-Shared Keys and Certificates.

Add

Name	Type	Type
HTTPSAdminCert	Certificate	Local
PreShareKey	Pre-Shared Key	ASCII



2. Create an IPsec Tunnel object

Local Network:192.168.1.0/24

Remote Network:192.168.2.0/24

Remote Gateway:10.0.0.2/24

Encapsulation mode:Tunnel

Authentication: select the Pre-shared key object defined before

D-Link Firewall 2.26.00 - Windows Internet Explorer

https://192.168.1.1

File Edit View Favorites Tools Help

D-Link Firewall 2.26.00

D-Link®

Building Networks for People

Home Configuration Tools Status Maintenance Setup Wizard

- Services
 - IP Pools
 - NAT Pools
 - Schedules
 - Authentication Objects
 - LDAP
 - IKE Config Mode Pool
 - IKE ID Lists
 - IKE Algorithms
 - Ipssec Algorithms
 - HTTP Banner Files
 - Rules
 - Interfaces
 - Ethernet
 - VLAN
 - Ipssec**
 - GRE
 - PPPoE
 - PPTP/L2TP Servers
 - PPTP/L2TP Clients
 - Interface Groups
 - ARP

IPsec

Manage the IPsec tunnel interfaces used for establishing IPsec VPN connections to and from this system.

Add Advanced Settings

Ipssec Tunnel

#	Name	Local Net	Remote Net	Remote Endpoint	Auth
---	------	-----------	------------	-----------------	------

D-Link Firewall 2.26.00 - Windows Internet Explorer

http://192.168.1.1

File Edit View Favorites Tools Help

Favorites D-Link Firewall 2.26.00

D-Link®

Building Networks for People

Home Configuration Tools Status Maintenance Setup Wizard

General Authentication XAuth Routing IKE Settings Keep-alive

General

Name: IPsecTunnel

Local Network: 192.168.1.0/24

Remote Network: 192.168.2.0/24

Remote Endpoint: 10.0.0.2

Encapsulation mode: Tunnel

IKE Config Mode Pool: (None)

Algorithms

IKE Algorithms: Medium

IKE Lifetime: 28800 seconds

IPsec Algorithms: Medium

IPsec Lifetime: 3600 seconds

IPsec Lifetime: 0 kilobytes

Comments

Address Book

InterfaceAddresses

ALG with AV/WCF

Services

IP Pools

NAT Pools

Schedules

Authentication Objects

VPN Objects

HTTP Banner Files

Rules

Interfaces

Ethernet

VLAN

IPsec

GRE

PPPoE

PPTP/L2TP Servers

PPTP/L2TP Clients

Interface Groups

ARP

Routing

IDP / IPS

D-Link Firewall 2.26.00 - Windows Internet Explorer

https://192.168.1.1

File Edit View Favorites Tools Help

Favorites D-Link Firewall 2.26.00

D-Link®

Building Networks for People

Home Configuration Tools Status Maintenance Setup Wizard

Services

- IP Pools
- NAT Pools
- Schedules
- Authentication Objects
- VPN Objects
 - LDAP
 - IKE Config Mode Pool
 - IKE ID Lists
 - IKE Algorithms
 - Ipssec Algorithms
- HTTP Banner Files

Rules

Interfaces

- Ethernet
- VLAN
- Ipssec
- GRE
- PPPoE
- PPTP/L2TP Servers
- PPTP/L2TP Clients
- Interface Groups
- ARP

General Authentication XAuth Routing IKE Settings Keep-alive Advanced

General

Name:

Local Network:

Remote Network:

Remote Endpoint:

Encapsulation mode:

IKE Config Mode Pool:

Algorithms

IKE Algorithms:

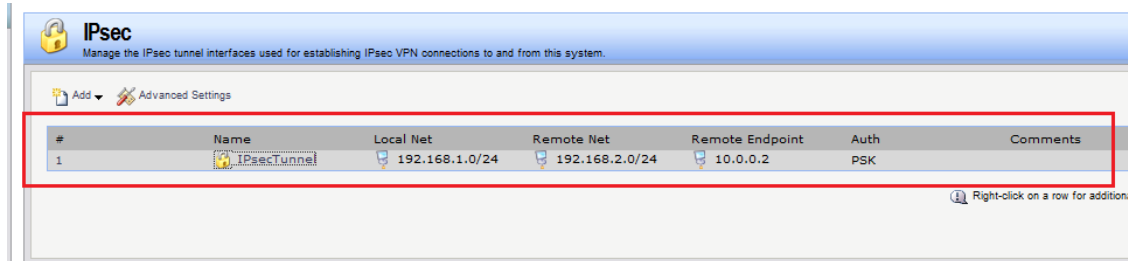
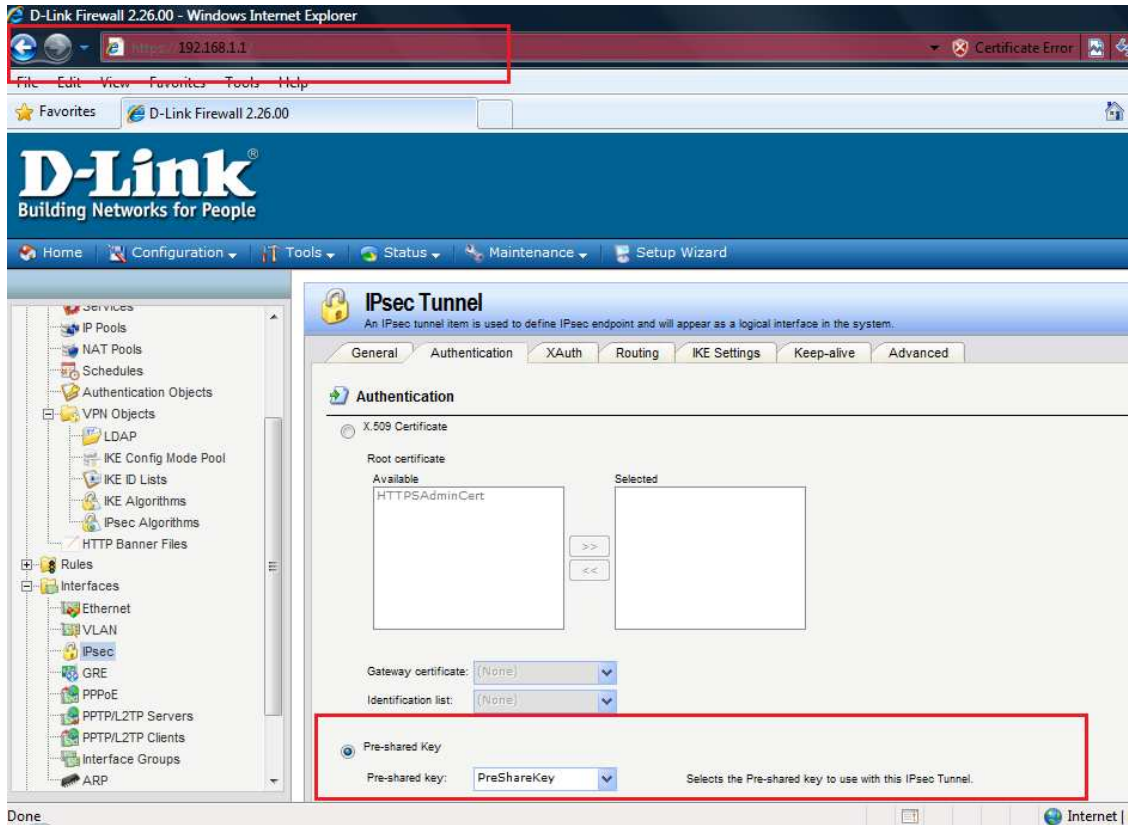
IKE Lifetime: seconds

Ipssec Algorithms:

Ipssec Lifetime: seconds

Ipssec Lifetime: kilobytes

Comments



3. Set up 2 IP rules

D-Link Firewall 2.26.00 - Windows Internet Explorer

http://192.168.1.1

File Edit View Favorites Tools Help

D-Link Firewall 2.26.00

D-Link®

Building Networks for People

Home Configuration Tools Status Maintenance Setup Wizard

DFL-210

- System
- Objects
- Rules
 - IP Rules
 - lan_to_wan
 - lan_to_dmz
 - dmz_to_lan
 - dmz_to_wan
 - wan_to_lan
 - wan_to_dmz
 - Access
- Interfaces
- Routing
- IDP / IPS
- User Authentication
- Traffic Management

IPsec

Manage the IPsec tunnel interfaces used for establishing IPsec VPN connections to and from this system.

Add Advanced Settings

#	Name	Local Net	Remote Net	Remote Endpoint
1	IPsecTunnel	192.168.1.0/24	192.168.2.0/24	10.0.0.0/24

D-Link Firewall 2.26.00 - Windows Internet Explorer

http://192.168.1.1

File Edit View Favorites Tools Help

D-Link Firewall 2.26.00

D-Link®

Building Networks for People

Home Configuration Tools Status Maintenance Setup Wizard

DFL-210

- System
- Objects
- Rules
 - IP Rules
 - Access
- Interfaces
- Routing
- IDP / IPS
- User Authentication
- Traffic Management

IP Rule

An IP rule specifies what action to perform on network traffic that matches the specified filter criteria.

General Log Settings NAT SAT Multiplex SAT

General

Name: TEST_1

Action: Allow

Service: all_services

Schedule: (None)

Address Filter

Specify source interface and source network, together with destination interface and destination network. All parameters have to match for the rule to match.

Source		Destination	
Interface:	lan	Interface:	IPsecTunnel
Network:	192.168.1.0/24	Network:	192.168.2.0/24

Comments

Comments:

D-Link Firewall 2.26.00 - Windows Internet Explorer

192.168.1.1

File Edit View Favorites Tools Help

D-Link Firewall 2.26.00

D-Link
Building Networks for People

Home Configuration Tools Status Maintenance Setup Wizard

DFL-210

- System
- Objects
- Rules
 - IP Rules
 - lan_to_wan
 - lan_to_dmz
 - dmz_to_lan
 - dmz_to_wan
 - wan_to_lan
 - wan_to_dmz
- Access
- Interfaces
- Routing
- IDP / IPS
- User Authentication
- Traffic Management

IP Rule
An IP rule specifies what action to perform on network traffic that matches the specified filter criteria.

General Log Settings NAT SAT Multiplex SAT

General

Name: TEST_2
 Action: Allow
 Service: all_services
 Schedule: (None)

Address Filter
Specify source interface and source network, together with destination interface and destination network. All parameters have to match for the rule to match.

Source Destination
 Interface: IPsecTunnel lan
 Network: 192.168.2.0/24 192.168.1.0/24

Comments
Comments:

D-Link Firewall 2.26.00 - Windows Internet Explorer

192.168.1.1

Edit View Favorites Tools Help

D-Link Firewall 2.26.00

D-Link
Building Networks for People

Home Configuration Tools Status Maintenance Setup Wizard

Logged in as administrator
admin - 192.168.1.91

Logout

DFL-210

- System
- Objects
- Rules
 - IP Rules
 - lan_to_wan
 - lan_to_dmz
 - dmz_to_lan
 - dmz_to_wan
 - wan_to_lan
 - wan_to_dmz
- Access
- Interfaces
- Routing
- IDP / IPS

IP Rules
IP rules are used to filter IP-based network traffic. In addition, they provide means for address translation as well as Server Load Balancing.

Add

#	Name	Action	Src If	Src Net	Dest If	Dest Net	Service
1	ping_fw	Allow	lan	lannet	core	lan_ip	ping-inbound
2	lan_to_wan						
3	lan_to_dmz						
4	dmz_to_lan						
5	dmz_to_wan						
6	wan_to_lan						
7	wan_to_dmz						
8	TEST_1	Allow	lan	192.168.1.0/24	IPsecTunnel	192.168.2.0/24	all_services
9	TEST_2	Allow	IPsecTunnel	192.168.2.0/24	lan	192.168.1.0/24	all_services

Right-click on a row for additional options

Move the rule to the top:

IP Rules
IP rules are used to filter IP-based network traffic. In addition, they provide means for address translation as well as Server Load Balancing.

Add

	Name	Action	Src If	Src Net	Dest If	Dest Net	Service
1	TEST_1	Allow	lan	192.168.1.0/24	IPsecTunnel	192.168.2.0/24	all_services
2	TEST_2	Allow	IPsecTunnel	192.168.2.0/24	lan	192.168.1.0/24	all_services
3	ping_fw	Allow	lan	lanet	core	lan_ip	ping-inbound
4	lan_to_wan						
5	lan_to_dmz						
6	dmz_to_lan						
7	dmz_to_wan						
8	wan_to_lan						
9	wan_to_dmz						

Add the route

File Edit View Favorites Tools Help

D-Link Firewall 2.26.00

D-Link
Building Networks for People

Logged in as administrator - 192.168.1.91

Home Configuration Tools Status Maintenance Setup Wizard

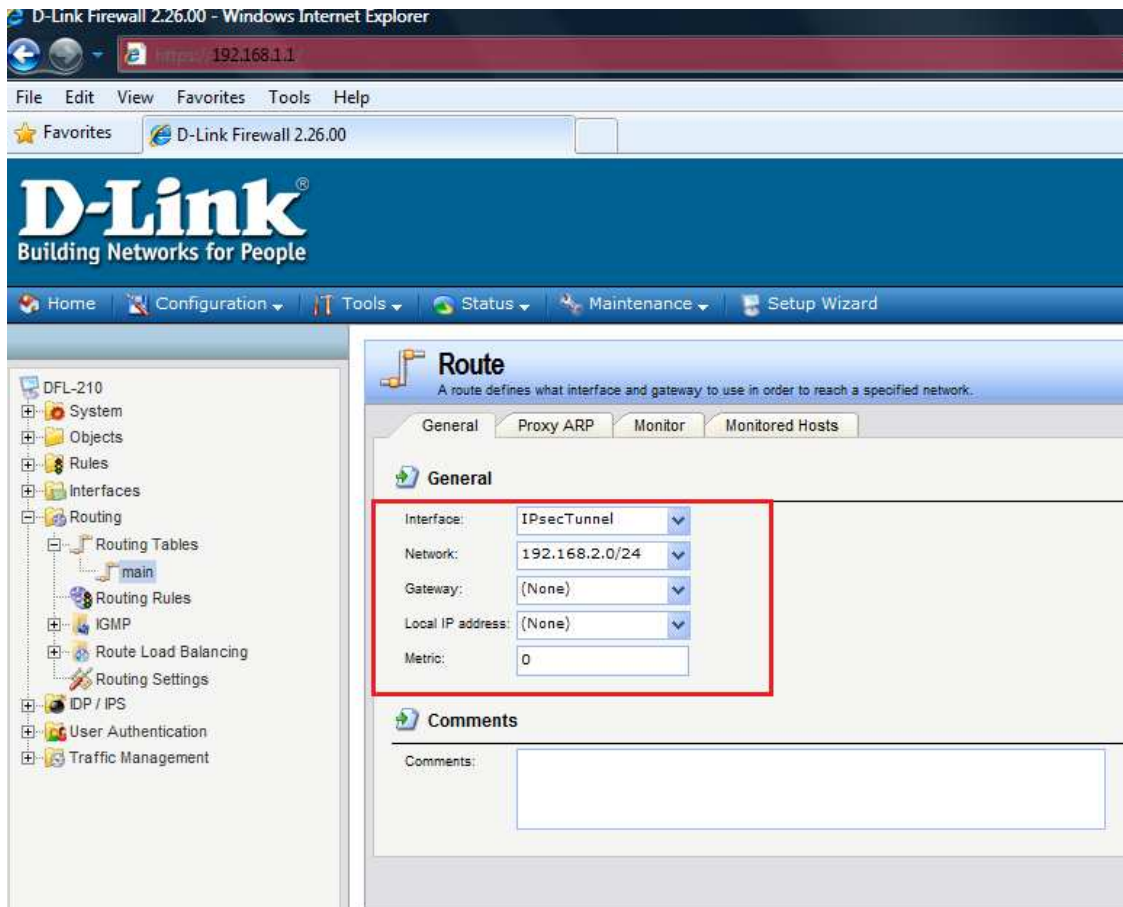
DFL-210

- System
- Objects
- Rules
- Interfaces
- Routing
 - Routing Tables
 - main**
 - Routing Rules
 - IGMP
 - Route Load Balancing
 - Routing Settings
 - IDP / IPS
 - User Authentication
 - Traffic Management

main
The system has a predefined main routing table. Alternate routing tables can be defined by the user.

Add Edit this object

	Type	Interface	Network	Gateway	Local IP address	Metric	Monitor this route	Comments
1	Route	wan	wanet			100	No	Direct route network wan over interface wan.
2	Route	dmz	dmznet			100	No	Direct route network dmz over interface dmz.
3	Route	lan	lanet			100	No	Direct route network lan over interface lan.
4	Route	IPsecTunnel	192.168.2.0/24			90	No	Direct route network 192.168.2.0/24 over interface IPsecTunnel.



The other side:

D-Link Firewall 2.26.00 - Windows Internet Explorer

https://192.168.1.1

File Edit View Favorites Tools Help

★ Favorites D-Link Firewall 2.26.00

D-Link®

Building Networks for People

Home Configuration Tools Status Maintenance Setup Wizard

DFL-1600

- System
- Objects
- Rules
 - IP Rules
 - lan1_to_wan1
 - Access
- Interfaces
 - Ethernet
 - VLAN
 - IPsec
 - GRE
 - PPPoE
 - PPTP/L2TP Servers
 - PPTP/L2TP Clients
 - Interface Groups
- ARP
- Routing
- IDP / IPS
- User Authentication
- Traffic Management
- ZoneDefense

IPsec Tunnel

An IPsec tunnel item is used to define IPsec endpoint and will appear as

General Authentication XAuth Routing IKE S

General

Name: IPsecTT

Local Network: 192.168.2.0/24

Remote Network: 192.168.1.0/24

Remote Endpoint: 10.0.0.1

Encapsulation mode: Tunnel

IKE Config Mode Pool: (None)

Algorithms

IKE Algorithms: Medium

IKE Lifetime: 28800

IPsec Algorithms: Medium

IPsec Lifetime: 3600

IPsec Lifetime: 0

PC_1 setting:

